

## TET2 antibody [N2], N-term

**Cat. No. GTX124204**

<b>Host</b>	Rabbit
<b>Clonality</b>	Polyclonal
<b>Isotype</b>	IgG
<b>Application</b>	WB, ICC/IF, IP, ChIP assay
<b>Reactivity</b>	Human

**Package**  
100 µl, 25 µl

### APPLICATION

#### Application Note

\*Optimal dilutions/concentrations should be determined by the researcher.

Suggested dilution	Recommended dilution
WB	1:500-1:3000
ICC/IF	1:100-1:1000
IP	1:100-1:500
ChIP assay	Assay dependent

Not tested in other applications.

**Calculated MW** 224 kDa. ([Note](#))

### PROPERTIES

<b>Form</b>	Liquid
<b>Buffer</b>	PBS, 20% Glycerol
<b>Preservative</b>	0.01% Thimerosal
<b>Storage</b>	Store as concentrated solution. Centrifuge briefly prior to opening vial. For short-term storage (1-2 weeks), store at 4°C. For long-term storage, aliquot and store at -20°C or below. Avoid multiple freeze-thaw cycles.
<b>Concentration</b>	1 mg/ml (Please refer to the vial label for the specific concentration.)
<b>Immunogen</b>	Recombinant protein encompassing a sequence within the N-terminus region of human TET2. The exact sequence is proprietary.
<b>Purification</b>	Purified by antigen-affinity chromatography.
<b>Conjugation</b>	Unconjugated

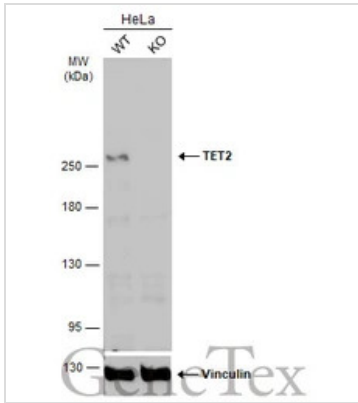


For full product information, images and publications, please visit our [website](#).

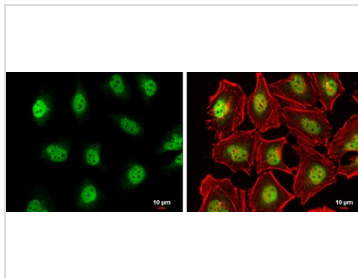
For laboratory research use only. Not for any clinical, therapeutic, or diagnostic use in humans or animals. Not for animal or human consumption.

**Note**

Purchasers shall not, and agree not to enable third parties to, analyze, copy, reverse engineer or otherwise attempt to determine the structure or sequence of the product.

**DATA IMAGES**

**GTx124204 WB Image**

Wild-type (WT) and TET2 knockout (KO) HeLa cell extracts (30 µg) were separated by 5% SDS-PAGE, and the membrane was blotted with TET2 antibody [N2], N-term (GTx124204) diluted at 1:500. The HRP-conjugated anti-rabbit IgG antibody (GTx213110-01) was used to detect the primary antibody, and the signal was developed with Trident ECL plus-Enhanced.


**GTx124204 ICC/IF Image**

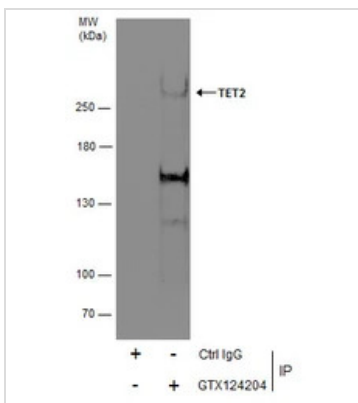
TET2 antibody [N2], N-term detects TET2 protein at nucleus by immunofluorescent analysis.

Sample: HeLa cells were fixed in 4% paraformaldehyde at RT for 15 min.

Green: TET2 protein stained by TET2 antibody [N2], N-term (GTx124204) diluted at 1:500.

Red: phalloidin, a cytoskeleton marker, diluted at 1:200.

Scale bar = 10 µm.


**GTx124204 IP Image**

Immunoprecipitation of TET2 protein from 293T whole cell extracts using 5 µg of TET2 antibody [N2], N-term (GTx124204).

Western blot analysis was performed using TET2 antibody [N2], N-term (GTx124204) diluted at 1:500.

EasyBlot HRP-conjugated anti rabbit IgG antibody (GTx221666-01) was used to detect the primary antibody.



For full product information, images and publications, please visit our [website](https://www.genetex.com).