

TET2 antibody [N2-2], N-term

Cat. No. GTX124205

Host	Rabbit
Clonality	Polyclonal
Isotype	IgG
Applications	WB, ICC/IF, IHC-P, IP, ChIP assay
Reactivity	Human, Mouse, SARS Coronavirus 2

References (21)

Package

100 µl, 25 µl

Applications

Application Note

*Optimal dilutions/concentrations should be determined by the researcher.

Suggested dilution	Recommended dilution
WB	1:500-1:3000
ICC/IF	1:100-1:1000
IHC-P	1:100-1:1000
IP	1:100-1:500
ChIP assay	Assay dependent

Not tested in other applications.

Calculated MW 224 kDa. ([Note](#))

Properties

Form	Liquid
Buffer	PBS, 20% Glycerol
Preservative	0.025% ProClin 300
Storage	Store as concentrated solution. Centrifuge briefly prior to opening vial. For short-term storage (1-2 weeks), store at 4°C. For long-term storage, aliquot and store at -20°C or below. Avoid multiple freeze-thaw cycles.
Concentration	1.78 mg/ml (Please refer to the vial label for the specific concentration.)
Immunogen	Recombinant protein encompassing a sequence within the N-terminus region of human TET2. The exact sequence is proprietary.
Purification	Purified by antigen-affinity chromatography.
Conjugation	Unconjugated



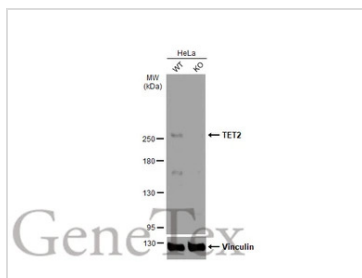
For full product information, images and publications, please visit our [website](#).

For laboratory research use only. Not for any clinical, therapeutic, or diagnostic use in humans or animals. Not for animal or human consumption.

Note

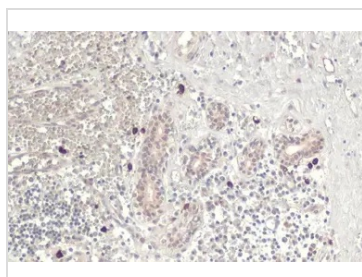
Purchasers shall not, and agree not to enable third parties to, analyze, copy, reverse engineer or otherwise attempt to determine the structure or sequence of the product.

DATA IMAGES



GTX124205 WB Image

Wild-type (WT) and TET2 knockout (KO) HeLa cell extracts (30 µg) were separated by 5% SDS-PAGE, and the membrane was blotted with TET2 antibody [N2-2], N-term (GTX124205) diluted at 1:500. The HRP-conjugated anti-rabbit IgG antibody (GTX213110-01) was used to detect the primary antibody.



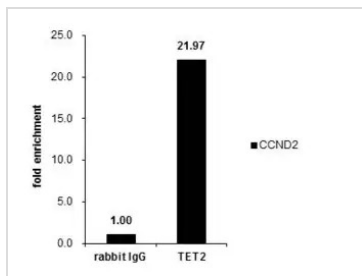
GTX124205 IHC-P Image

TET2 antibody [N2-2], N-term detects TET2 protein at nucleus by immunohistochemical analysis.

Sample: Paraffin-embedded human breast carcinoma.

TET2 stained by TET2 antibody [N2-2], N-term (GTX124205) diluted at 1:500.

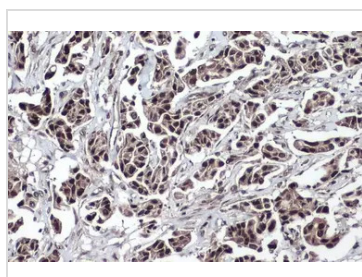
Antigen Retrieval: Citrate buffer, pH 6.0, 15 min



GTX124205 ChIP assay Image

Cross-linked ChIP was performed with U2OS chromatin extract and 5 µg of either control rabbit IgG or anti-TET2 antibody. The precipitated DNA was detected by PCR with primer set targeting to CCND2.

ChIP experiment and primer designs are based on [Nat Commun. 2013;4:2166](https://doi.org/10.1038/ncomms2166).



GTX124205 IHC-P Image

TET2 antibody [N2-2], N-term detects TET2 protein at nucleus by immunohistochemical analysis.

Sample: Paraffin-embedded human breast carcinoma.

TET2 stained by TET2 antibody [N2-2], N-term (GTX124205) diluted at 1:500.

Antigen Retrieval: Citrate buffer, pH 6.0, 15 min



For full product information, images and publications, please visit our [website](https://www.genetex.com).