

## TET1 antibody [N3C1]

Cat. No. GTX124207

<b>Host</b>	Rabbit
<b>Clonality</b>	Polyclonal
<b>Isotype</b>	IgG
<b>Applications</b>	WB, ICC/IF, IHC-P, IHC-Wm, IP, ChIP assay, IHC
<b>Reactivity</b>	Human, Mouse, Rat, Monkey

References ( 76 )

★★★★★ Review ( 2 )

Package

100 µl

## PRODUCT

## Summary

TET1 antibody recognizes TET1 protein, which is a methylcytosine dioxygenase that catalyzes the sequential steps of DNA demethylation. Expression of TET1 protein is spatiotemporally regulated during embryonic development. Abnormal TET1 activation is associated with cancer growth and metastasis.

## Applications

## Application Note

\*Optimal dilutions/concentrations should be determined by the researcher.

Suggested dilution	Recommended dilution
WB	1:500-1:3000
ICC/IF	1:100-1:1000
IHC-P	1:100-1:1000
IHC-Wm	Assay dependent
IP	Assay dependent
ChIP assay	Assay dependent
IHC	Assay dependent

Not tested in other applications.

## Calculated MW

235 kDa. ( [Note](#) )

## Product Note

This antibody is specific for human TET1 protein, and it does not cross react with human TET2 and TET3 protein. KO/KD validation is based on published data (PMID: 32089682).

## Properties

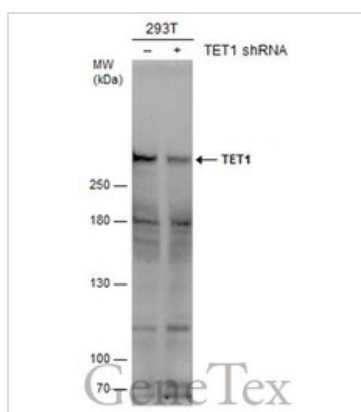
<b>Form</b>	Liquid
<b>Buffer</b>	PBS, 20% Glycerol
<b>Preservative</b>	0.025% ProClin 300
<b>Storage</b>	Store as concentrated solution. Centrifuge briefly prior to opening vial. For short-term storage (1-2 weeks), store at 4°C. For long-term storage, aliquot and store at -20°C or below. Avoid multiple freeze-thaw cycles.



For full product information, images and publications, please visit our [website](#).

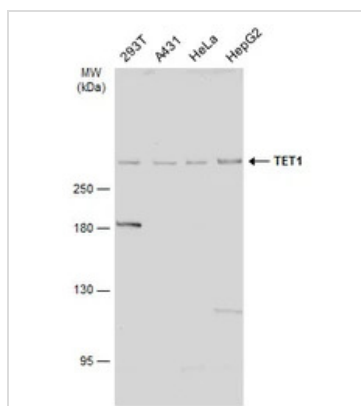
<b>Concentration</b>	1.45 mg/ml (Please refer to the vial label for the specific concentration.)
<b>Immunogen</b>	Recombinant protein encompassing a sequence within the center region of human TET1. The exact sequence is proprietary.
<b>Purification</b>	Purified by antigen-affinity chromatography.
<b>Conjugation</b>	Unconjugated
<b>Note</b>	For laboratory research use only. Not for any clinical, therapeutic, or diagnostic use in humans or animals. Not for animal or human consumption.  Purchasers shall not, and agree not to enable third parties to, analyze, copy, reverse engineer or otherwise attempt to determine the structure or sequence of the product.

## DATA IMAGES



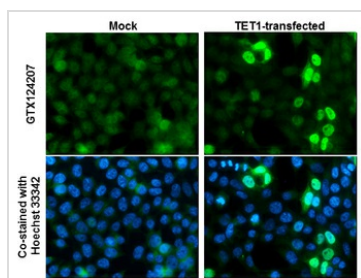
### GTx124207 WB Image

Non-transfected (–) and transfected (+) 293T whole cell extracts (50 µg) were separated by 5% SDS-PAGE, and the membrane was blotted with TET1 antibody [N3C1] (GTx124207) diluted at 1:1000. The HRP-conjugated anti-rabbit IgG antibody (GTx213110-01) was used to detect the primary antibody.



### GTx124207 WB Image

Various whole cell extracts (30 µg) were separated by 5% SDS-PAGE, and the membrane was blotted with TET1 antibody [N3C1] (GTx124207) diluted at 1:2000. The HRP-conjugated anti-rabbit IgG antibody (GTx213110-01) was used to detect the primary antibody.



### GTx124207 ICC/IF Image

TET1 antibody [N3C1] detects TET1 protein at nucleus by immunofluorescent analysis.

Sample: Mock and transfected 293T cells were fixed in 4% paraformaldehyde at RT for 15 min.

Green: TET1 stained by TET1 antibody [N3C1] (GTx124207) diluted at 1:1000.

Blue: Hoechst 33342 staining.



For full product information, images and publications, please visit our [website](https://www.genetex.com).