

JMJD3 antibody [C2], C-term

Cat. No. GTX124222

Host	Rabbit
Clonality	Polyclonal
Isotype	IgG
Applications	WB, IHC-P
Reactivity	Human, Mouse, Rat

References (5)

★★★★★ Review (1)

Package

100 µl, 25 µl

Applications

Application Note

*Optimal dilutions/concentrations should be determined by the researcher.

Suggested dilution	Recommended dilution
WB	1:500-1:3000
IHC-P	1:100-1:1000

Note : Recommend blocking with 1% skim milk.

Not tested in other applications.

Calculated MW 177 kDa. ([Note](#))

Properties

Form	Liquid
Buffer	PBS, 20% Glycerol
Preservative	0.025% ProClin 300
Storage	Store as concentrated solution. Centrifuge briefly prior to opening vial. For short-term storage (1-2 weeks), store at 4°C. For long-term storage, aliquot and store at -20°C or below. Avoid multiple freeze-thaw cycles.
Concentration	0.95 mg/ml (Please refer to the vial label for the specific concentration.)
Immunogen	Recombinant protein encompassing a sequence within the C-terminus region of human JMJD3. The exact sequence is proprietary.
Purification	Purified by antigen-affinity chromatography.
Conjugation	Unconjugated

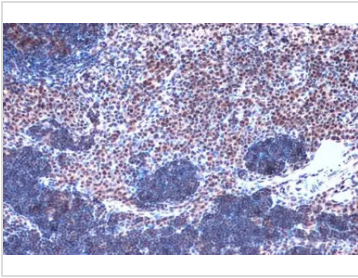
Note

For laboratory research use only. Not for any clinical, therapeutic, or diagnostic use in humans or animals. Not for animal or human consumption.

Purchasers shall not, and agree not to enable third parties to, analyze, copy, reverse engineer or otherwise attempt to determine the structure or sequence of the product.

For full product information, images and publications, please visit our [website](#).

DATA IMAGES



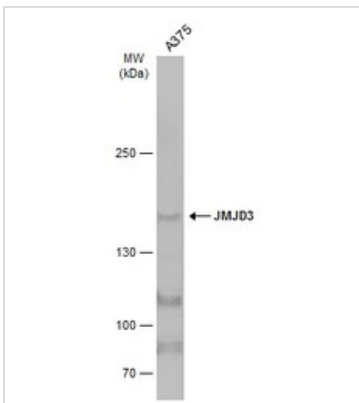
GTx124222 IHC-P Image

JMJD3 antibody [C2], C-term detects JMJD3 protein at nucleus by immunohistochemical analysis.

Sample: Paraffin-embedded rat lymph node.

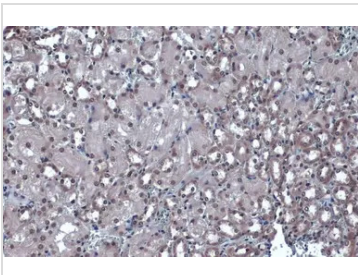
JMJD3 stained by JMJD3 antibody [C2], C-term (GTx124222) diluted at 1:500.

Antigen Retrieval: Citrate buffer, pH 6.0, 15 min



GTx124222 WB Image

Whole cell extract (30 µg) was separated by 5% SDS-PAGE, and the membrane was blotted with JMJD3 antibody [C2], C-term (GTx124222) diluted at 1:1000. The HRP-conjugated anti-rabbit IgG antibody (GTx213110-01) was used to detect the primary antibody, and the signal was developed with Trident ECL plus-Enhanced.



GTx124222 IHC-P Image

JMJD3 antibody [C2], C-term detects JMJD3 protein at nucleus by immunohistochemical analysis.

Sample: Paraffin-embedded mouse kidney.

JMJD3 stained by JMJD3 antibody [C2], C-term (GTx124222) diluted at 1:500.

Antigen Retrieval: Citrate buffer, pH 6.0, 15 min



For full product information, images and publications, please visit our [website](https://www.genetex.com).