

# Dengue virus NS2B protein antibody

**Cat. No. GTX124246**

|                     |                |
|---------------------|----------------|
| <b>Host</b>         | Rabbit         |
| <b>Clonality</b>    | Polyclonal     |
| <b>Isotype</b>      | IgG            |
| <b>Applications</b> | WB, ICC/IF     |
| <b>Reactivity</b>   | Dengue virus 2 |

References ( 33 )

★★★★★ Review ( 2 )

Package

100 µl, 25 µl

## Applications

### Application Note

\*Optimal dilutions/concentrations should be determined by the researcher.

| Suggested dilution | Recommended dilution |
|--------------------|----------------------|
| WB                 | 1:1000-1:10000       |
| ICC/IF             | 1:100-1:2000         |

Not tested in other applications.

**Calculated MW** 15 kDa. ( [Note](#) )

### Product Note

This antibody was raised against Dengue virus 2 NS2B protein, which may cross react with NS2B protein of Dengue virus 3 but does not recognize with NS2B protein of JEV.

## Properties

|                      |  |
|----------------------|--|
| <b>Form</b>          | Liquid   |
| <b>Buffer</b>        | PBS, 20% Glycerol  |
| <b>Preservative</b>  | 0.025% ProClin 300   |
| <b>Storage</b>       | Store as concentrated solution. Centrifuge briefly prior to opening vial. For short-term storage (1-2 weeks), store at 4°C. For long-term storage, aliquot and store at -20°C or below. Avoid multiple freeze-thaw cycles. |
| <b>Concentration</b> | 1.15 mg/ml (Please refer to the vial label for the specific concentration.)  |
| <b>Immunogen</b>     | Full length Dengue virus 2 NS2B Recombinant protein (Dengue virus 2 (strain 16681 PDK 53))   |
| <b>Purification</b>  | Purified by antigen-affinity chromatography.   |
| <b>Conjugation</b>   | Unconjugated   |

### Note

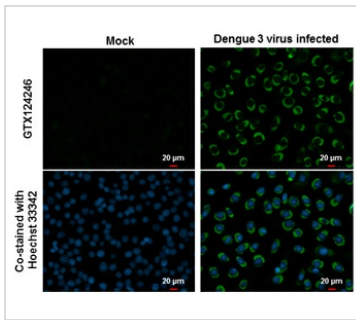
For laboratory research use only. Not for any clinical, therapeutic, or diagnostic use in humans or animals. Not for animal or human consumption.

Purchasers shall not, and agree not to enable third parties to, analyze, copy, reverse engineer or otherwise attempt to determine the structure or sequence of the product.



For full product information, images and publications, please visit our [website](#).

## DATA IMAGES



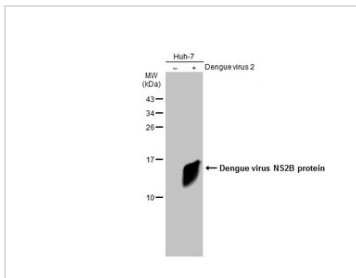
### GTx124246 ICC/IF Image

NS2B (Dengue virus) antibody detects NS2B (Dengue virus) protein at cytoplasm by immunofluorescent analysis.

Samples: BHK-21 cells mock (left) and infected with Dengue virus 3 (right) were fixed in MeOH.

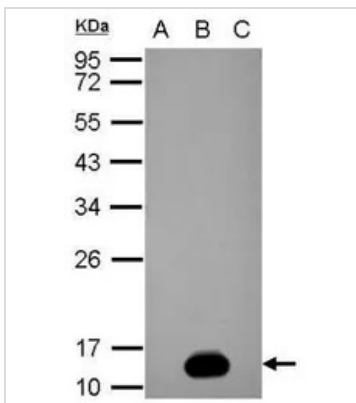
Green: NS2B (Dengue virus) protein stained by NS2B (Dengue virus) antibody (GTx124246) diluted at 1:2000.

Blue: Hoechst 33342 staining.



### GTx124246 WB Image

Non-infected (–) and infected (+) Huh-7 whole cell extracts (15 μg) were separated by 15% SDS-PAGE, and the membrane was blotted with Dengue virus NS2B protein antibody (GTx124246) diluted at 1:1000. The HRP-conjugated anti-rabbit IgG antibody (GTx213110-01) was used to detect the primary antibody.



### GTx124246 WB Image

Sample (20 μg of whole cell lysate)

A: BHK-21

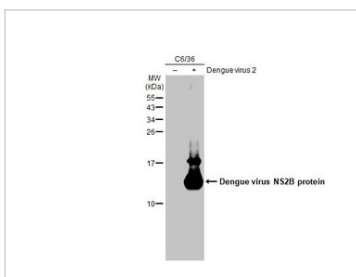
B: Dengue virus 2 infect BHK-21

C: Japanese encephalitis virus infect BHK-21

15% SDS PAGE

GTx124246 diluted at 1:5000

The HRP-conjugated anti-rabbit IgG antibody (GTx213110-01) was used to detect the primary antibody.



### GTx124246 WB Image

Non-infected (–) and infected (+) C6/36 whole cell extract (15 μg) were separated by 15% SDS-PAGE, and the membrane was blotted with Dengue virus NS2B protein antibody (GTx124246) diluted at 1:1000. The HRP-conjugated anti-rabbit IgG antibody (GTx213110-01) was used to detect the primary antibody.



For full product information, images and publications, please visit our [website](http://www.genetex.com).