

Dengue virus NS2B protein antibody

Cat. No. GTX124246

Host	Rabbit
Clonality	Polyclonal
Isotype	IgG
Applications	WB, ICC/IF
Reactivity	Dengue virus 2

References (31)

★★★★★ Review (2)

Package

100 µl, 25 µl

Applications

Application Note

*Optimal dilutions/concentrations should be determined by the researcher.

Suggested dilution	Recommended dilution
WB	1:1000-1:10000
ICC/IF	1:100-1:2000

Not tested in other applications.

Calculated MW 15 kDa. ([Note](#))

Product Note This antibody was raised against Dengue virus 2 NS2B protein, which may cross react with NS2B protein of Dengue virus 3 but does not recognize with NS2B protein of JEV.

Properties

Form	Liquid
Buffer	PBS, 20% Glycerol
Preservative	0.025% ProClin 300
Storage	Store as concentrated solution. Centrifuge briefly prior to opening vial. For short-term storage (1-2 weeks), store at 4°C. For long-term storage, aliquot and store at -20°C or below. Avoid multiple freeze-thaw cycles.
Concentration	1.15 mg/ml (Please refer to the vial label for the specific concentration.)
Immunogen	Full length Dengue virus 2 NS2B Recombinant protein (Dengue virus 2 (strain 16681 PDK 53))
Purification	Purified by antigen-affinity chromatography.
Conjugation	Unconjugated

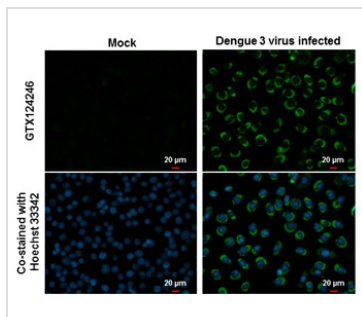
Note

For laboratory research use only. Not for any clinical, therapeutic, or diagnostic use in humans or animals. Not for animal or human consumption.

Purchasers shall not, and agree not to enable third parties to, analyze, copy, reverse engineer or otherwise attempt to determine the structure or sequence of the product.



For full product information, images and publications, please visit our [website](#).

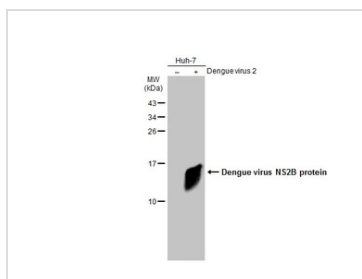
DATA IMAGES

GTx124246 ICC/IF Image

NS2B (Dengue virus) antibody detects NS2B (Dengue virus) protein at cytoplasm by immunofluorescent analysis.

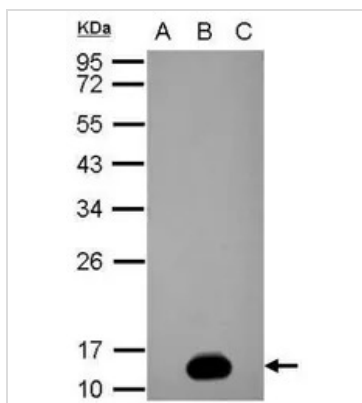
Samples: BHK-21 cells mock (left) and infected with Dengue virus 3 (right) were fixed in MeOH.

Green: NS2B (Dengue virus) protein stained by NS2B (Dengue virus) antibody (GTx124246) diluted at 1:2000.

Blue: Hoechst 33342 staining.


GTx124246 WB Image

Non-infected (–) and infected (+) Huh-7 whole cell extracts (15 μg) were separated by 15% SDS-PAGE, and the membrane was blotted with Dengue virus NS2B protein antibody (GTx124246) diluted at 1:1000. The HRP-conjugated anti-rabbit IgG antibody (GTx213110-01) was used to detect the primary antibody.


GTx124246 WB Image

Sample (20 μg of whole cell lysate)

A: BHK-21

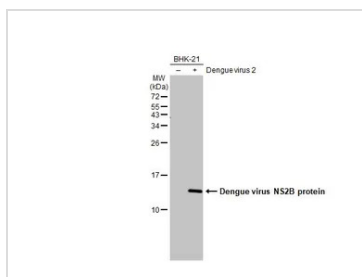
B: Dengue virus 2 infect BHK-21

C: Japanese encephalitis virus infect BHK-21

15% SDS PAGE

GTx124246 diluted at 1:5000

The HRP-conjugated anti-rabbit IgG antibody (GTx213110-01) was used to detect the primary antibody.


GTx124246 WB Image

Non-infected (–) and infected (+) BHK-21 whole cell extracts (5 μg) were separated by 15% SDS-PAGE, and the membrane was blotted with Dengue virus NS2B protein antibody (GTx124246) diluted at 1:1000. The HRP-conjugated anti-rabbit IgG antibody (GTx213110-01) was used to detect the primary antibody.



For full product information, images and publications, please visit our [website](http://www.genetex.com).