

# Dengue virus Capsid protein antibody

**Cat. No. GTX124247**

<b>Host</b>	Rabbit
<b>Clonality</b>	Polyclonal
<b>Isotype</b>	IgG
<b>Application</b>	WB, ICC/IF, ELISA
<b>Reactivity</b>	Dengue virus 2

Reference ( 6 )  
 Package  
 100 µl, 25 µl

## APPLICATION

### Application Note

\*Optimal dilutions/concentrations should be determined by the researcher.

Suggested dilution	Recommended dilution
WB	1:500-1:3000
ICC/IF	1:100-1:2000
ELISA	Assay dependent

Not tested in other applications.

**Calculated MW** 12 kDa. ( [Note](#) )

**Product Note** This antibody was raised against Dengue virus 2 Capsid protein, which may cross react with Capsid protein of Dengue virus 3 but does not recognize with Capsid protein of JEV.

## PROPERTIES

<b>Form</b>	Liquid
<b>Buffer</b>	0.1M Tris, 0.1M Glycine, 20% Glycerol
<b>Preservative</b>	0.01% Thimerosal
<b>Storage</b>	Store as concentrated solution. Centrifuge briefly prior to opening vial. For short-term storage (1-2 weeks), store at 4°C. For long-term storage, aliquot and store at -20°C or below. Avoid multiple freeze-thaw cycles.
<b>Concentration</b>	1 mg/ml (Please refer to the vial label for the specific concentration.)
<b>Immunogen</b>	Full length Dengue virus 2 Capsid Recombinant protein (Dengue virus 2 (strain 16681 PDK 53))
<b>Purification</b>	Purified by antigen-affinity chromatography.
<b>Conjugation</b>	Unconjugated



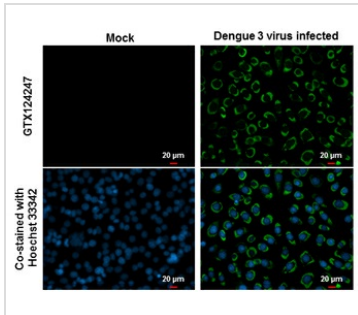
For full product information, images and publications, please visit our [website](#).

For laboratory research use only. Not for any clinical, therapeutic, or diagnostic use in humans or animals. Not for animal or human consumption.

#### Note

Purchasers shall not, and agree not to enable third parties to, analyze, copy, reverse engineer or otherwise attempt to determine the structure or sequence of the product.

#### DATA IMAGES



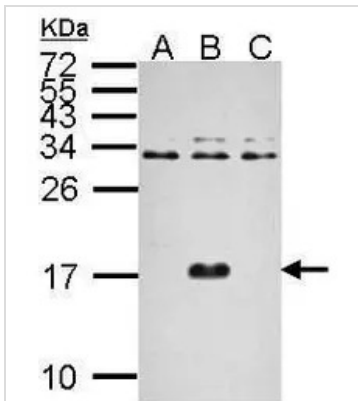
#### GTx124247 ICC/IF Image

Capsid Protein (Dengue virus) antibody detects Capsid Protein (Dengue virus) protein at cytoplasm by immunofluorescent analysis.

Samples: BHK-21 cells mock (left) and infected with Dengue virus 3 (right) were fixed in paraformaldehyde.

Green: Capsid Protein (Dengue virus) protein stained by Capsid Protein (Dengue virus) antibody (GTx124247) diluted at 1:2000.

Blue: Hoechst 33342 staining.



#### GTx124247 WB Image

Sample (20 μg of whole cell lysate)

A: BHK-21

B: Dengue virus 2 infect BHK-21

C: Japanese encephalitis virus infect BHK-21

15% SDS PAGE

GTx124247 diluted at 1:2000

The HRP-conjugated anti-rabbit IgG antibody (GTx213110-01) was used to detect the primary antibody.



For full product information, images and publications, please visit our [website](https://www.genetex.com).