

Dengue virus NS3 protein antibody

Cat No. GTX124252

Host	Rabbit
Clonality	Polyclonal
Isotype	IgG
Application	WB, ICC/IF, IHC-P, FACS, IP, IHC
Reactivity	Dengue virus

Reference (63)

★★★★★ Review (9)

Package

100 µl, 25 µl

APPLICATION

Application Note

*Optimal dilutions/concentrations should be determined by the researcher.

Suggested dilution	Dilution
WB	1:500-1:3000
ICC/IF	1:100-1:2000
IHC-P	Assay dependent
FACS	Assay dependent
IP	Assay dependent
IHC	Assay dependent

Not tested in other applications.

Calculated MW 70 kDa. ([Note](#))

PROPERTIES

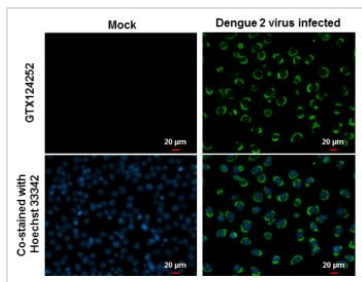
Form	Liquid
Buffer	1XPBS, 20% Glycerol (pH7). 0.025% ProClin 300 was added as a preservative.
Storage	Store as concentrated solution. Centrifuge briefly prior to opening vial. For short-term storage (1-2 weeks), store at 4°C. For long-term storage, aliquot and store at -20°C or below. Avoid multiple freeze-thaw cycles.
Concentration	1.3 mg/ml (Please refer to the vial label for the specific concentration.)
Immunogen	Recombinant protein encompassing a sequence within the center region of Dengue virus NS3 protein. (Dengue virus 2 (strain 16681 PDK 53)) The exact sequence is proprietary.
Purification	Purified by antigen-affinity chromatography.
Conjugation	Unconjugated
Note	For laboratory use only. Not for any clinical, therapeutic, or diagnostic use in humans or animals. Not for animal or human consumption.



For full product information, images and publications, please visit our [website](#).

Date 2021 / 01 / 16 Page 1 of 2

DATA IMAGES



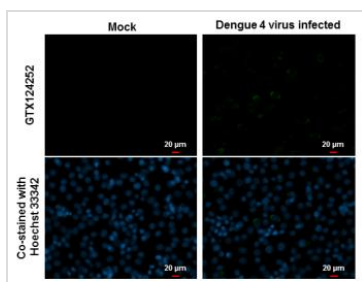
GTX124252 ICC/IF Image

NS3 (Dengue virus) antibody detects NS3 (Dengue virus) protein at cytoplasm by immunofluorescent analysis.

Samples: BHK-21 cells mock (left) and infected with Dengue virus 2 (right) were fixed in MeOH.

Green: NS3 (Dengue virus) protein stained by NS3 (Dengue virus) antibody (GTX124252) diluted at 1:2000.

Blue: Hoechst 33342 staining.



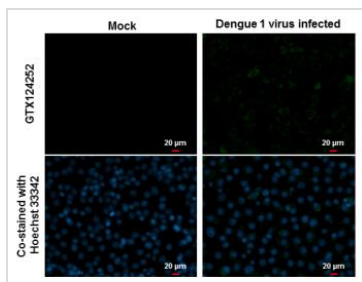
GTX124252 ICC/IF Image

NS3 (Dengue virus) antibody detects NS3 (Dengue virus) protein at cytoplasm by immunofluorescent analysis.

Samples: BHK-21 cells mock (left) and infected with Dengue virus 4 (right) were fixed in MeOH.

Green: NS3 (Dengue virus) protein stained by NS3 (Dengue virus) antibody (GTX124252) diluted at 1:2000.

Blue: Hoechst 33342 staining.



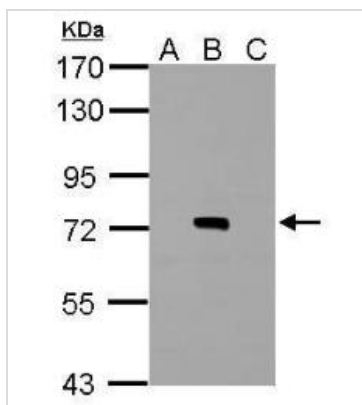
GTX124252 ICC/IF Image

NS3 (Dengue virus) antibody detects NS3 (Dengue virus) protein at cytoplasm by immunofluorescent analysis.

Samples: BHK-21 cells mock (left) and infected with Dengue virus 1 (right) were fixed in MeOH.

Green: NS3 (Dengue virus) protein stained by NS3 (Dengue virus) antibody (GTX124252) diluted at 1:2000.

Blue: Hoechst 33342 staining.



GTX124252 WB Image

Sample (20 μg of whole cell lysate)

A: BHK-21

B: Dengue virus 2 infect BHK-21

C: JEV infect BHK-21

7.5% SDS PAGE

GTX124252 diluted at 1:2000

The HRP-conjugated anti-rabbit IgG antibody (GTX213110-01) was used to detect the primary antibody.



For full product information, images and publications, please visit our [website](#).