

# Dengue virus NS5 protein antibody

**Cat. No. GTX124253**

<b>Host</b>	Rabbit
<b>Clonality</b>	Polyclonal
<b>Isotype</b>	IgG
<b>Application</b>	WB, ICC/IF, FACS
<b>Reactivity</b>	Dengue virus 2

Reference ( 7 )  
 Package  
 100 µl, 25 µl

## APPLICATION

### Application Note

\*Optimal dilutions/concentrations should be determined by the researcher.

Suggested dilution	Recommended dilution
WB	1:500-1:3000
ICC/IF	1:100-1:2000
FACS	Assay dependent

Not tested in other applications.

<b>Calculated MW</b>	105 kDa. ( <a href="#">Note</a> )
<b>Product Note</b>	This antibody was raised against Dengue virus 2 NS5 protein, which may cross react with NS5 protein of Dengue virus 1/3/4 but does not recognize with NS5 protein of JEV.

## PROPERTIES

<b>Form</b>	Liquid
<b>Buffer</b>	PBS, 1% BSA, 20% Glycerol
<b>Preservative</b>	0.025% ProClin 300
<b>Storage</b>	Store as concentrated solution. Centrifuge briefly prior to opening vial. For short-term storage (1-2 weeks), store at 4°C. For long-term storage, aliquot and store at -20°C or below. Avoid multiple freeze-thaw cycles.
<b>Concentration</b>	0.2 mg/ml (Please refer to the vial label for the specific concentration.)
<b>Immunogen</b>	Recombinant protein encompassing a sequence within the C-terminus region of Dengue virus NS5 protein (Dengue virus 2 (strain 16681 PDK 53)). The exact sequence is proprietary.
<b>Purification</b>	Purified by antigen-affinity chromatography.
<b>Conjugation</b>	Unconjugated

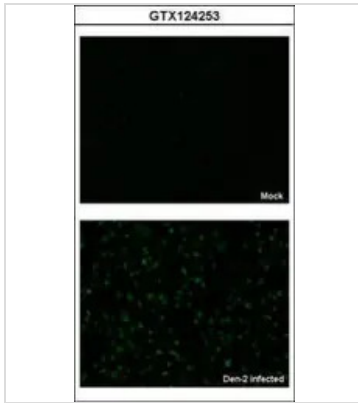


For full product information, images and publications, please visit our [website](#).

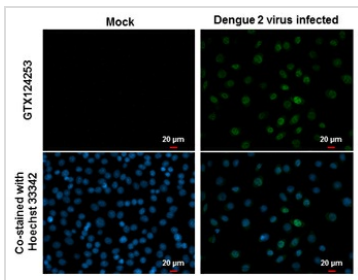
For laboratory research use only. Not for any clinical, therapeutic, or diagnostic use in humans or animals. Not for animal or human consumption.

**Note**

Purchasers shall not, and agree not to enable third parties to, analyze, copy, reverse engineer or otherwise attempt to determine the structure or sequence of the product.

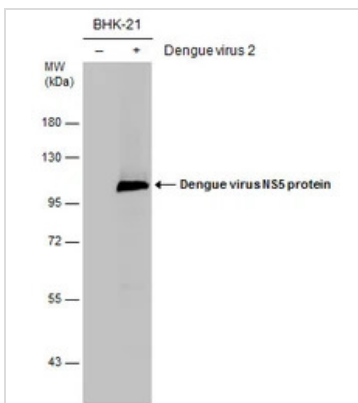
**DATA IMAGES**

**GTx124253 ICC/IF Image**

Immunofluorescence analysis of paraformaldehyde-fixed BHK-21 cell, using NS5 (Dengue virus 2) (GTx124253) antibody at 1:2000 dilution.


**GTx124253 ICC/IF Image**

NS5 (Dengue virus) antibody detects NS5 (Dengue virus) protein at nucleus by immunofluorescent analysis. Samples: BHK-21 cells mock (left) and infected with Dengue virus 2 (right) were fixed in MeOH.

Green: NS5 (Dengue virus) protein stained by NS5 (Dengue virus) antibody (GTx124253) diluted at 1:2000. Blue: Hoechst 33342 staining.


**GTx124253 WB Image**

Non-infected (-) and infected (+) BHK-21 whole cell extracts (15 μg) were separated by 7.5% SDS-PAGE, and the membrane was blotted with Dengue virus NS5 protein antibody (GTx124253) diluted at 1:2000.



For full product information, images and publications, please visit our [website](#).