

# Enterovirus 71 antibody

**Cat. No. GTX124261**

<b>Host</b>	Rabbit
<b>Clonality</b>	Polyclonal
<b>Isotype</b>	IgG
<b>Application</b>	WB, ICC/IF, IHC-P, ELISA
<b>Reactivity</b>	Enterovirus 71

Reference ( 4 )  
 Package  
 100 µl, 25 µl

## APPLICATION

### Application Note

\*Optimal dilutions/concentrations should be determined by the researcher.

Suggested dilution	Recommended dilution
WB	1:5000-1:20000
ICC/IF	1:100-1:1000
IHC-P	1:100-1:1000
ELISA	Assay dependent

Not tested in other applications.

## PROPERTIES

<b>Form</b>	Liquid
<b>Buffer</b>	PBS, 20% Glycerol
<b>Preservative</b>	0.025% ProClin 300
<b>Storage</b>	Store as concentrated solution. Centrifuge briefly prior to opening vial. For short-term storage (1-2 weeks), store at 4°C. For long-term storage, aliquot and store at -20°C or below. Avoid multiple freeze-thaw cycles.
<b>Concentration</b>	5.6 mg/ml (Please refer to the vial label for the specific concentration.)
<b>Immunogen</b>	The immunogen used to generate this antibody corresponds to EV71
<b>Purification</b>	Affinity purified by Protein A.
<b>Conjugation</b>	Unconjugated

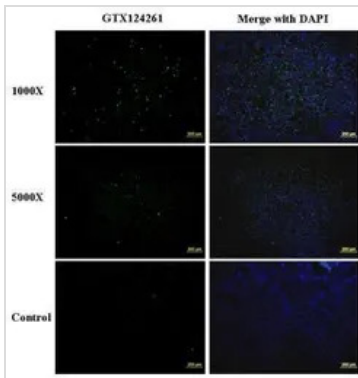
### Note

For laboratory research use only. Not for any clinical, therapeutic, or diagnostic use in humans or animals. Not for animal or human consumption.

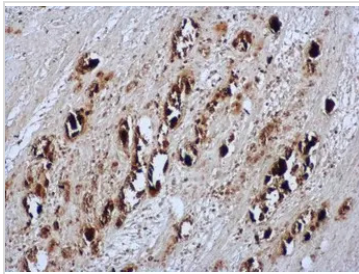
Purchasers shall not, and agree not to enable third parties to, analyze, copy, reverse engineer or otherwise attempt to determine the structure or sequence of the product.



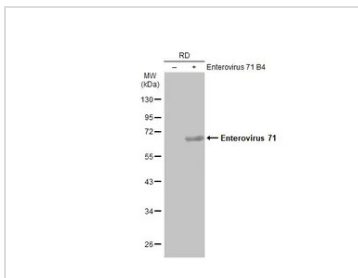
For full product information, images and publications, please visit our [website](#).

**DATA IMAGES**

**GTx124261 ICC/IF Image**

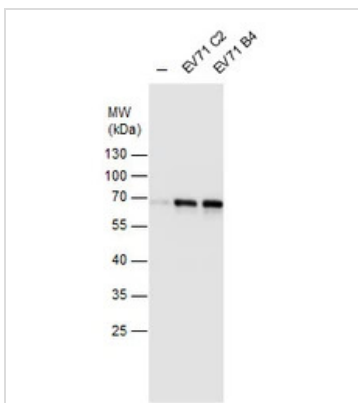
Immunofluorescence analysis of paraformaldehyde-fixed EV71 infected Vero cell, using EV71 (GTx124261) antibody at 1:1000 and 1:5000 dilution.


**GTx124261 IHC-P Image**

EV71 antibody detects EV71 viral protein in EV71 infected mouse skeletal muscle by immunohistochemical analysis. Sample: Paraffin-embedded EV71 infected mouse skeletal muscle. EV71 antibody [GTx124261] diluted at 1:500  
Antigen Retrieval: Citrate buffer


**GTx124261 WB Image**

Non-infected (-) and infected (+) RD whole cell extracts (30 µg) were separated by 10% SDS-PAGE, and the membrane was blotted with Enterovirus 71 antibody (GTx124261) diluted at 1:20000. The HRP-conjugated anti-rabbit IgG antibody (GTx213110-01) was used to detect the primary antibody.


**GTx124261 WB Image**

EV71 antibody detects EV71 protein by western blot analysis. Un-infected (-) and infected with EV71 C2 or B4 strain RD whole cell extracts (30 µg) were separated by 10% SDS-PAGE, and the membrane was blotted with EV71 antibody (GTx124261) at a dilution of 1:20000. The HRP-conjugated anti-rabbit IgG antibody (GTx213110-01) was used to detect the primary antibody.



For full product information, images and publications, please visit our [website](https://www.genetex.com).