

Bcl-XS antibody

Cat. No. GTX124266

Host	Rabbit
Clonality	Polyclonal
Isotype	IgG
Application	WB, IHC-P, IP
Reactivity	Human, Rat

Reference (2)
Package
100 µl, 25 µl

APPLICATION

Application Note

*Optimal dilutions/concentrations should be determined by the researcher.

Suggested dilution	Recommended dilution
WB	1:500-1:3000
IHC-P	1:100-1:1000
IP	Assay dependent

Not tested in other applications.

Calculated MW 18.9 kDa. ([Note](#))

Product Note GTX124266 Bcl-XS antibody was designed specific for BCL-XS
IP/MS validation was supported by references (PMID:30377416)

PROPERTIES

Form	Liquid
Buffer	0.1M Tris, 0.1M Glycine, 20% Glycerol
Preservative	0.01% Thimerosal
Storage	Store as concentrated solution. Centrifuge briefly prior to opening vial. For short-term storage (1-2 weeks), store at 4°C. For long-term storage, aliquot and store at -20°C or below. Avoid multiple freeze-thaw cycles.
Concentration	1 mg/ml (Please refer to the vial label for the specific concentration.)
Immunogen	Carrier-protein conjugated synthetic peptide encompassing a sequence within the C-terminus region of human Bcl-XS. The exact sequence is proprietary.
Purification	Purified by antigen-affinity chromatography.
Conjugation	Unconjugated

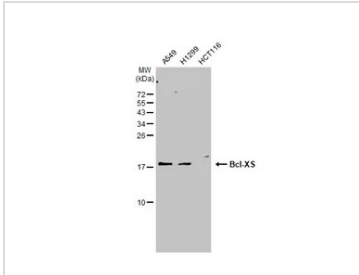


For full product information, images and publications, please visit our [website](#).

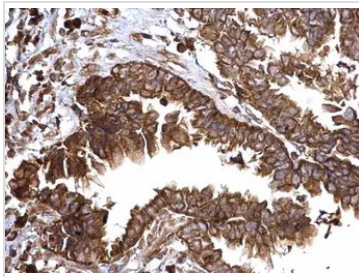
For laboratory research use only. Not for any clinical, therapeutic, or diagnostic use in humans or animals. Not for animal or human consumption.

Note

Purchasers shall not, and agree not to enable third parties to, analyze, copy, reverse engineer or otherwise attempt to determine the structure or sequence of the product.

DATA IMAGES

GTX124266 WB Image

Various whole cell extracts (30 µg) were separated by 15% SDS-PAGE, and the membrane was blotted with Bcl-XS antibody (GTX124266) diluted at 1:1000. The HRP-conjugated anti-rabbit IgG antibody (GTX213110-01) was used to detect the primary antibody.

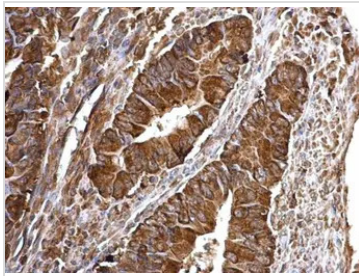

GTX124266 IHC-P Image

Bcl-XS antibody detects Bcl-XS protein at cytosol on human ovarian carcinoma by immunohistochemical analysis.

Sample: Paraffin-embedded human ovarian carcinoma.

Bcl-XS antibody (GTX124266) dilution: 1:500.

Antigen Retrieval: Trilogy™ (EDTA based, pH 8.0) buffer, 15min

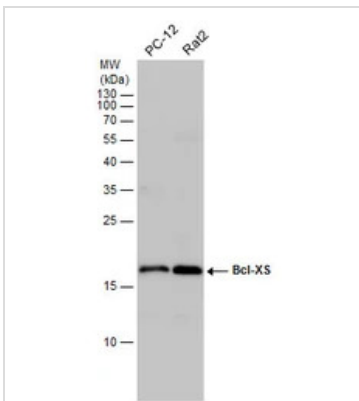

GTX124266 IHC-P Image

Bcl-XS antibody detects Bcl-XS protein at cytosol on human colon carcinoma by immunohistochemical analysis.

Sample: Paraffin-embedded human colon carcinoma.

Bcl-XS antibody (GTX124266) dilution: 1:500.

Antigen Retrieval: Trilogy™ (EDTA based, pH 8.0) buffer, 15min


GTX124266 WB Image

Various whole cell extracts (30 µg) were separated by 15% SDS-PAGE, and the membrane was blotted with Bcl-XS antibody (GTX124266) diluted at 1:1000.



For full product information, images and publications, please visit our [website](https://www.genetex.com).