

Gli1 antibody

Cat. No. GTX124274

Host	Rabbit
Clonality	Polyclonal
Isotype	IgG
Applications	WB, ICC/IF, ChIP-seq
Reactivity	Human, Mouse

References (2)

Package

100 µl, 25 µl

Applications

Application Note

*Optimal dilutions/concentrations should be determined by the researcher.

Suggested dilution	Recommended dilution
WB	1:500-1:3000
ICC/IF	Assay dependent
ChIP-seq	Assay dependent

Not tested in other applications.

Calculated MW 119 kDa. ([Note](#))

Properties

Form	Liquid
Buffer	PBS, 20% Glycerol
Preservative	0.025% ProClin 300
Storage	Store as concentrated solution. Centrifuge briefly prior to opening vial. For short-term storage (1-2 weeks), store at 4°C. For long-term storage, aliquot and store at -20°C or below. Avoid multiple freeze-thaw cycles.
Concentration	1.57 mg/ml (Please refer to the vial label for the specific concentration.)
Immunogen	Carrier-protein conjugated synthetic peptide encompassing a sequence within the C-terminus region of mouse Gli1. The exact sequence is proprietary.
Purification	Purified by antigen-affinity chromatography.
Conjugation	Unconjugated

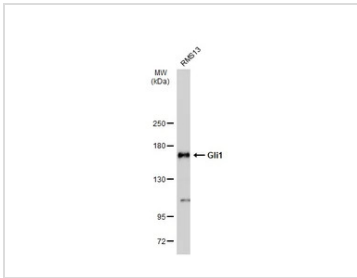
Note

For laboratory research use only. Not for any clinical, therapeutic, or diagnostic use in humans or animals. Not for animal or human consumption.

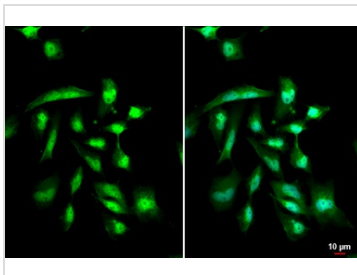
Purchasers shall not, and agree not to enable third parties to, analyze, copy, reverse engineer or otherwise attempt to determine the structure or sequence of the product.



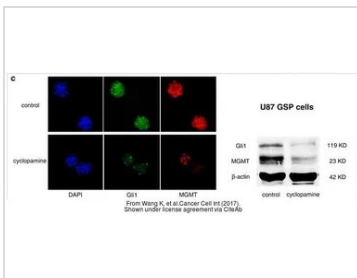
For full product information, images and publications, please visit our [website](#).

DATA IMAGES

GTK124274 WB Image

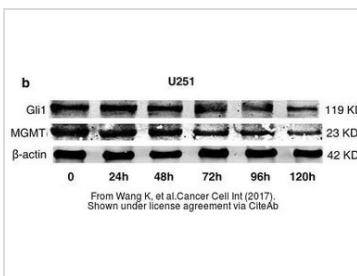
Whole cell extract (30 µg) was separated by 5% SDS-PAGE, and the membrane was blotted with Gli1 antibody (GTK124274) diluted at 1:1000. The HRP-conjugated anti-rabbit IgG antibody (GTK213110-01) was used to detect the primary antibody.


GTK124274 ICC/IF Image

Gli1 antibody detects Gli1 protein at cytoplasm and nucleus by immunofluorescent analysis. Sample: RMS-13 cells were fixed in 4% paraformaldehyde at RT for 15 min. Green: Gli1 stained by Gli1 antibody (GTK124274) diluted at 1:5000.


GTK124274 WB Image

The data was published in the journal Cancer Cell Int in 2017. [PMID: 29225516](https://pubmed.ncbi.nlm.nih.gov/29225516/)


GTK124274 WB Image

The data was published in the journal Cancer Cell Int in 2017. [PMID: 29225516](https://pubmed.ncbi.nlm.nih.gov/29225516/)



For full product information, images and publications, please visit our [website](https://www.genetex.com).