

## Dengue virus NS1 protein antibody

**Cat. No. GTX124280**

<b>Host</b>	Rabbit
<b>Clonality</b>	Polyclonal
<b>Isotype</b>	IgG
<b>Applications</b>	WB, ICC/IF, IHC-P, FCM, IP, ELISA, IHC-P (cell pellet)
<b>Reactivity</b>	Dengue virus 2

References ( 24 )

Package

100 µl, 25 µl

## Applications

**Application Note**

\*Optimal dilutions/concentrations should be determined by the researcher.

Suggested dilution	Recommended dilution
WB	1:500-1:3000
ICC/IF	1:100-1:2000
IHC-P	1:100-1:1000
FCM	Assay dependent
IP	Assay dependent
ELISA	Assay dependent
IHC-P (cell pellet)	Assay dependent

Not tested in other applications.

**Calculated MW** 40 kDa. ( [Note](#) )**Product Note**

This antibody was raised against Dengue virus 2 NS1 protein, which may cross react with NS1 protein of Dengue virus 1/3/4 but does not recognize with NS1 protein of JEV.

## Properties

<b>Form</b>	Liquid
<b>Buffer</b>	PBS, 20% Glycerol
<b>Preservative</b>	0.025% ProClin 300
<b>Storage</b>	Store as concentrated solution. Centrifuge briefly prior to opening vial. For short-term storage (1-2 weeks), store at 4°C. For long-term storage, aliquot and store at -20°C or below. Avoid multiple freeze-thaw cycles.
<b>Concentration</b>	0.25 mg/ml (Please refer to the vial label for the specific concentration.)
<b>Immunogen</b>	Recombinant protein encompassing a sequence within the center region of Dengue virus NS1 protein (Dengue virus 2 (strain 16681 PDK 53)). The exact sequence is proprietary.

For full product information, images and publications, please visit our [website](#).

**Purification** Purified by antigen-affinity chromatography.

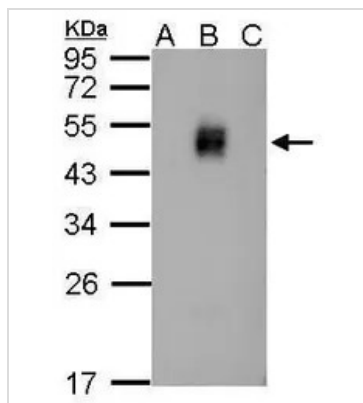
**Conjugation** Unconjugated

**Note**

For laboratory research use only. Not for any clinical, therapeutic, or diagnostic use in humans or animals. Not for animal or human consumption.

Purchasers shall not, and agree not to enable third parties to, analyze, copy, reverse engineer or otherwise attempt to determine the structure or sequence of the product.

DATA IMAGES



**GTx124280 WB Image**

Sample (20 µg of whole cell lysate)

A: BHK-21

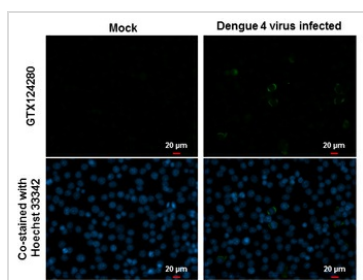
B: Dengue virus 2 infect BHK-21

C: JEV infect BHK-21

12% SDS PAGE

GTx124280 diluted at 1:2000

The HRP-conjugated anti-rabbit IgG antibody (GTx213110-01) was used to detect the primary antibody.



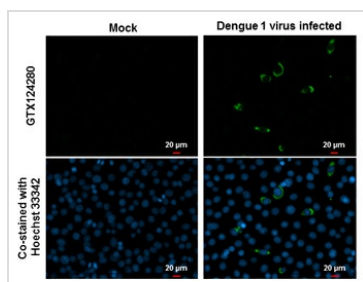
**GTx124280 ICC/IF Image**

NS1 (Dengue virus) antibody detects NS1 (Dengue virus) protein at cytoplasm by immunofluorescent analysis.

Samples: BHK-21 cells mock (left) and infected with Dengue virus 4 (right) were fixed in MeOH.

Green: NS1 (Dengue virus) protein stained by NS1 (Dengue virus) antibody (GTx124280) diluted at 1:2000.

Blue: Hoechst 33342 staining.



**GTx124280 ICC/IF Image**

NS1 (Dengue virus) antibody detects NS1 (Dengue virus) protein at cytoplasm by immunofluorescent analysis.

Samples: BHK-21 cells mock (left) and infected with Dengue virus 1 (right) were fixed in MeOH.

Green: NS1 (Dengue virus) protein stained by NS1 (Dengue virus) antibody (GTx124280) diluted at 1:2000.

Blue: Hoechst 33342 staining.



For full product information, images and publications, please visit our [website](https://www.genetex.com).