

Dengue virus NS1 protein antibody (Biotin)

Cat. No. GTX124280-02

Host	Rabbit
Clonality	Polyclonal
Isotype	IgG
Applications	WB
Reactivity	Dengue virus 2

Package
100 µl, 25 µl

Applications

Application Note

*Optimal dilutions/concentrations should be determined by the researcher.

Suggested dilution	Recommended dilution
WB	1:500-1:3000

Not tested in other applications.

Calculated MW 40 kDa. ([Note](#))

Properties

Form	Liquid
Buffer	PBS
Preservative	No preservative
Storage	Store as concentrated solution. Centrifuge briefly prior to opening vial. For short-term storage (1-2 weeks), store at 4°C. For long-term storage, aliquot and store at -20°C or below. Avoid multiple freeze-thaw cycles.
Concentration	1.1 mg/ml (Please refer to the vial label for the specific concentration.)
Immunogen	Recombinant protein encompassing a sequence within the center region of Dengue virus NS1 protein (Dengue virus 2 (strain 16681 PDK 53)). The exact sequence is proprietary.
Purification	Purified by antigen-affinity chromatography.
Conjugation	Biotin

Note

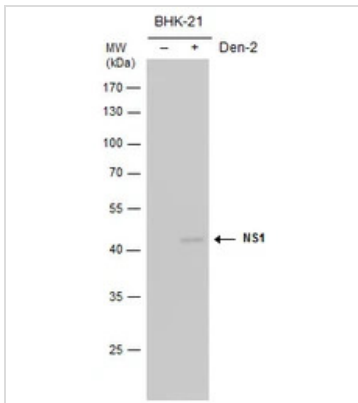
For laboratory research use only. Not for any clinical, therapeutic, or diagnostic use in humans or animals. Not for animal or human consumption.

Purchasers shall not, and agree not to enable third parties to, analyze, copy, reverse engineer or otherwise attempt to determine the structure or sequence of the product.



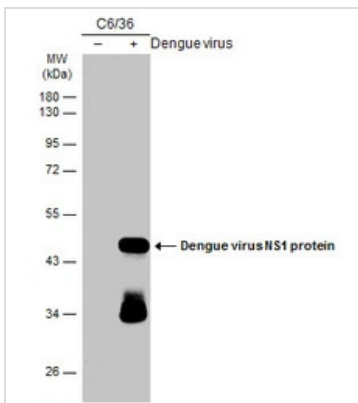
For full product information, images and publications, please visit our [website](#).

DATA IMAGES



GTX124280-02 WB Image

NS1(Dengue virus) conjugated biotin antibody detects NS1 protein by western blot analysis. Un-infected (-) and infected (+, Den2 infection for) BHK-21 whole cell extracts (20 µg) were separated by 10% SDS-PAGE, and the membrane was blotted with NS1 conjugated biotin antibody (GTX224280-02) diluted by 1:2000 and developed with Peroxidase-conjugated Streptavidin.



GTX124280-02 WB Image

Non-infected (-) and infected (+) C6/36 whole cell extracts (5 µg) were separated by 10% SDS-PAGE, and the membrane was blotted with Dengue virus NS1 protein antibody (Biotin) (GTX124280-02) diluted at 1:2000. The HRP-conjugated anti-rabbit IgG antibody (GTX213110-01) was used to detect the primary antibody.



For full product information, images and publications, please visit our [website](https://www.genetex.com).