

## Mab21l antibody

Cat. No. GTX124289

Host	Rabbit
Clonality	Polyclonal
Isotype	IgG
Applications	WB, IHC-P, IHC-Wm
Reactivity	Zebrafish

Package  
100 µl, 25 µl

## Applications

## Application Note

\*Optimal dilutions/concentrations should be determined by the researcher.

Suggested dilution	Recommended dilution
WB	1:500-1:3000
IHC-P	1:100-1:1000
IHC-Wm	1:100-1:500

Not tested in other applications.

Calculated MW 41 kDa. ( [Note](#) )

## Properties

Form	Liquid
Buffer	0.1M Tris-Glycine (pH7), 20% Glycerol
Preservative	0.01% Thimerosal
Storage	Store as concentrated solution. Centrifuge briefly prior to opening vial. For short-term storage (1-2 weeks), store at 4°C. For long-term storage, aliquot and store at -20°C or below. Avoid multiple freeze-thaw cycles.
Concentration	0.89 mg/ml (Please refer to the vial label for the specific concentration.)
Immunogen	The immunogen used to generate this antibody corresponds to zebrafish Mab21l
Purification	Purified by antigen-affinity chromatography.
Conjugation	Unconjugated

## Note

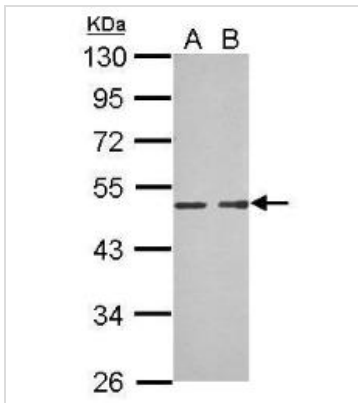
For laboratory research use only. Not for any clinical, therapeutic, or diagnostic use in humans or animals. Not for animal or human consumption.

Purchasers shall not, and agree not to enable third parties to, analyze, copy, reverse engineer or otherwise attempt to determine the structure or sequence of the product.



For full product information, images and publications, please visit our [website](#).

## DATA IMAGES



### GTX124289 WB Image

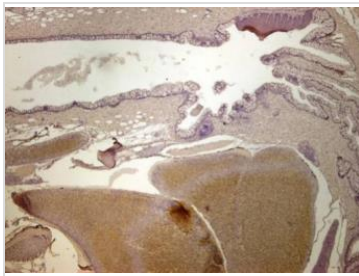
Sample (30 ug of whole cell lysate)

A: adult zebrafish

B: zebrafish eye

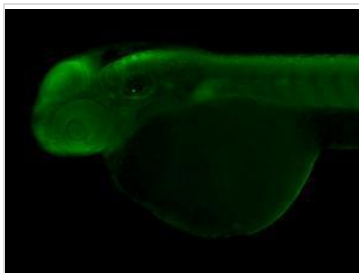
10% SDS PAGE

GTX124289 diluted at 1:1000



### GTX124289 IHC-P Image

Immunohistochemical analysis of paraffin-embedded zebrafish tissue, using mab2111 (GTX124289) antibody at 1:300 dilution.



### GTX124289 IHC-Wm Image

Immunohistochemical analysis (whole mount) of zebrafish embryo, using mab2111 (GTX124289) antibody at 1:200 dilution.



For full product information, images and publications, please visit our [website](https://www.genetex.com).