

Lin7a antibody

Cat. No. GTX124290

Host	Rabbit
Clonality	Polyclonal
Isotype	IgG
Application	WB, IHC-P, IHC-Wm
Reactivity	Zebrafish

Package
100 µl, 25 µl

APPLICATION

Application Note

*Optimal dilutions/concentrations should be determined by the researcher.

Suggested dilution	Recommended dilution
WB	1:500-1:3000
IHC-P	1:100-1:1000
IHC-Wm	1:100-1:500

Not tested in other applications.

PROPERTIES

Form	Liquid
Buffer	1XPBS (pH7), 1% BSA, 20% Glycerol
Preservative	0.01% Thimerosal
Storage	Store as concentrated solution. Centrifuge briefly prior to opening vial. For short-term storage (1-2 weeks), store at 4°C. For long-term storage, aliquot and store at -20°C or below. Avoid multiple freeze-thaw cycles.
Concentration	1 mg/ml (Please refer to the vial label for the specific concentration.)
Immunogen	The immunogen used to generate this antibody corresponds to zebrafish Lin7a
Purification	Purified by antigen-affinity chromatography.
Conjugation	Unconjugated

Note

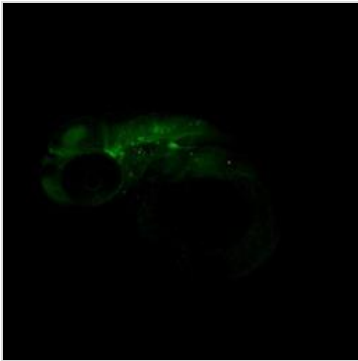
For laboratory research use only. Not for any clinical, therapeutic, or diagnostic use in humans or animals. Not for animal or human consumption.

Purchasers shall not, and agree not to enable third parties to, analyze, copy, reverse engineer or otherwise attempt to determine the structure or sequence of the product.



For full product information, images and publications, please visit our [website](#).

DATA IMAGES

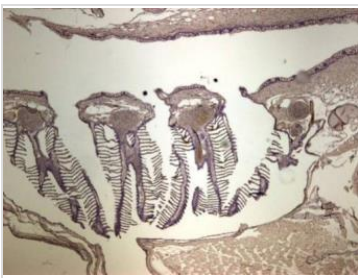


GTx124290 IHC-Wm Image

Lin7a antibody detects Lin7a protein on zebrafish by whole mount immunohistochemical analysis.

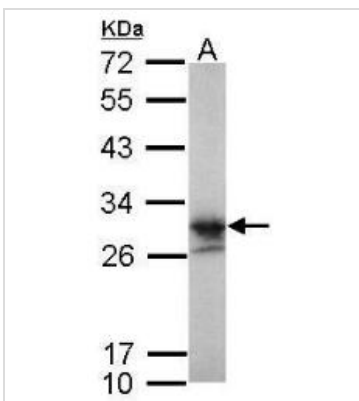
Sample: 2 days-post-fertilization zebrafish embryo.

Lin7a antibody (GTx124290) dilution: 1:200.



GTx124290 IHC-P Image

Immunohistochemical analysis of paraffin-embedded zebrafish tissue, using lin7a (GTx124290) antibody at 1:300 dilution.



GTx124290 WB Image

Sample (30 ug of whole cell lysate)

A: zebrafish eye

12% SDS PAGE

GTx124290 diluted at 1:1000



For full product information, images and publications, please visit our [website](https://www.genetex.com).