

Idh1 antibody

Cat. No. GTX124320

| | |
|--------------------|------------|
| Host | Rabbit |
| Clonality | Polyclonal |
| Isotype | IgG |
| Application | WB |
| Reactivity | Zebrafish |

Reference (1)
 Package
 100 µl, 25 µl

APPLICATION

Application Note

*Optimal dilutions/concentrations should be determined by the researcher.

| Suggested dilution | Recommended dilution |
|--------------------|----------------------|
| WB | 1:1000-1:10000 |

Not tested in other applications.

PROPERTIES

| | |
|----------------------|--|
| Form | Liquid |
| Buffer | PBS, 20% Glycerol |
| Preservative | 0.025% ProClin 300 |
| Storage | Store as concentrated solution. Centrifuge briefly prior to opening vial. For short-term storage (1-2 weeks), store at 4°C. For long-term storage, aliquot and store at -20°C or below. Avoid multiple freeze-thaw cycles. |
| Concentration | 0.83 mg/ml (Please refer to the vial label for the specific concentration.) |
| Immunogen | The immunogen used to generate this antibody corresponds to zebrafish Idh1 |
| Purification | Purified by antigen-affinity chromatography. |
| Conjugation | Unconjugated |

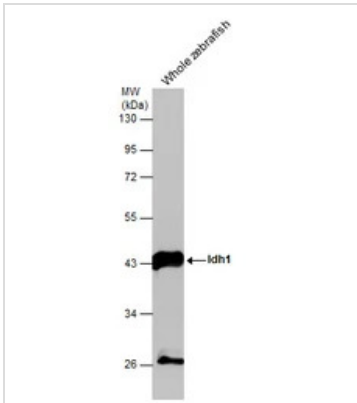
Note

For laboratory research use only. Not for any clinical, therapeutic, or diagnostic use in humans or animals. Not for animal or human consumption.

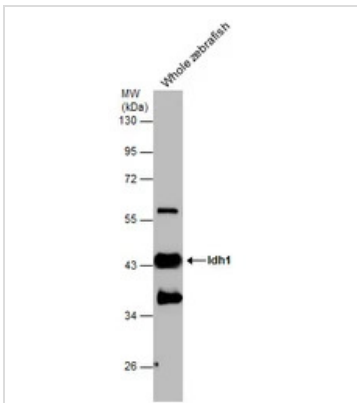
Purchasers shall not, and agree not to enable third parties to, analyze, copy, reverse engineer or otherwise attempt to determine the structure or sequence of the product.



For full product information, images and publications, please visit our [website](#).

DATA IMAGES

GTX124320 WB Image

Whole zebrafish extract (30 µg) was separated by 10% SDS-PAGE, and the membrane was blotted with Idh1 antibody (GTX124320) diluted at 1:5000.


GTX124320 WB Image

Whole zebrafish extract (30 µg) was separated by 10% SDS-PAGE, and the membrane was blotted with Idh1 antibody (GTX124320) diluted at 1:5000.



For full product information, images and publications, please visit our [website](https://www.genetex.com).