

Fxr1 antibody

Cat. No. GTX124335

Host	Rabbit
Clonality	Polyclonal
Isotype	IgG
Application	WB, IHC-P
Reactivity	Zebrafish

Package

100 µl, 25 µl

APPLICATION

Application Note

*Optimal dilutions/concentrations should be determined by the researcher.

Suggested dilution	Recommended dilution
WB	1:500-1:3000
IHC-P	1:100-1:1000

Not tested in other applications.

PROPERTIES

Form	Liquid
Buffer	0.1M Tris-Glycine (pH7), 20% Glycerol
Preservative	0.01% Thimerosal
Storage	Store as concentrated solution. Centrifuge briefly prior to opening vial. For short-term storage (1-2 weeks), store at 4°C. For long-term storage, aliquot and store at -20°C or below. Avoid multiple freeze-thaw cycles.
Concentration	0.35 mg/ml (Please refer to the vial label for the specific concentration.)
Immunogen	The immunogen used to generate this antibody corresponds to zebrafish Fxr1
Purification	Purified by antigen-affinity chromatography.
Conjugation	Unconjugated

Note

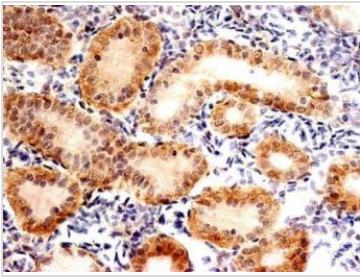
For laboratory research use only. Not for any clinical, therapeutic, or diagnostic use in humans or animals. Not for animal or human consumption.

Purchasers shall not, and agree not to enable third parties to, analyze, copy, reverse engineer or otherwise attempt to determine the structure or sequence of the product.



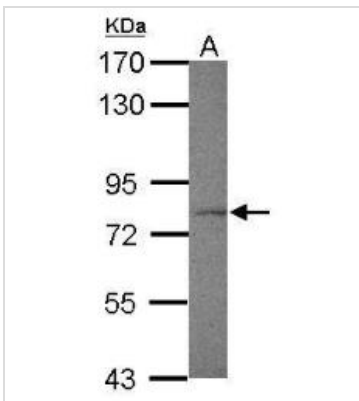
For full product information, images and publications, please visit our [website](#).

DATA IMAGES



GTx124335 IHC-P Image

Immunohistochemical analysis of paraffin-embedded sections of zebrafish kidney tube, using fxr1 (GTx124335) antibody at 1:300 dilution.



GTx124335 WB Image

Sample (30 ug of whole cell lysate)

A: zebrafish brain

7.5% SDS PAGE

GTx124335 diluted at 1:1000



For full product information, images and publications, please visit our [website](https://www.genetex.com).