

Smarcb1a antibody

Cat. No. GTX124337

Host	Rabbit
Clonality	Polyclonal
Isotype	IgG
Applications	WB, IHC-P, IHC-Wm
Reactivity	Zebrafish

Package
100 µl, 25 µl

Applications

Application Note

*Optimal dilutions/concentrations should be determined by the researcher.

Suggested dilution	Recommended dilution
WB	1:500-1:3000
IHC-P	1:100-1:1000
IHC-Wm	1:100-1:500

Not tested in other applications.

Calculated MW 43 kDa. ([Note](#))

Properties

Form	Liquid
Buffer	0.1M Tris, 0.1M Glycine, 20% Glycerol
Preservative	0.01% Thimerosal
Storage	Store as concentrated solution. Centrifuge briefly prior to opening vial. For short-term storage (1-2 weeks), store at 4°C. For long-term storage, aliquot and store at -20°C or below. Avoid multiple freeze-thaw cycles.
Concentration	1 mg/ml (Please refer to the vial label for the specific concentration.)
Immunogen	The immunogen used to generate this antibody corresponds to zebrafish Smarcb1a
Purification	Purified by antigen-affinity chromatography.
Conjugation	Unconjugated

Note

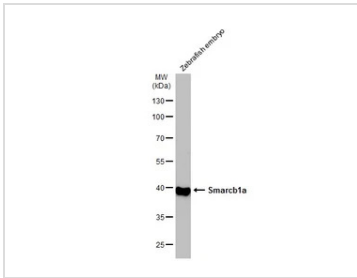
For laboratory research use only. Not for any clinical, therapeutic, or diagnostic use in humans or animals. Not for animal or human consumption.

Purchasers shall not, and agree not to enable third parties to, analyze, copy, reverse engineer or otherwise attempt to determine the structure or sequence of the product.



For full product information, images and publications, please visit our [website](#).

DATA IMAGES



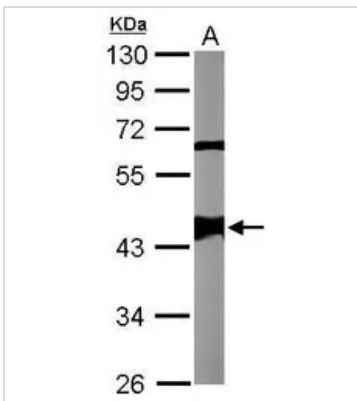
GTx124337 WB Image

Zebrafish tissue extract (30 µg) was separated by 10% SDS-PAGE, and the membrane was blotted with Smarcb1a antibody (GTx124337) diluted at 1:1000. The HRP-conjugated anti-rabbit IgG antibody (GTx213110-01) was used to detect the primary antibody.



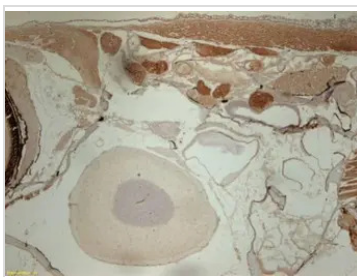
GTx124337 IHC-Wm Image

Immunohistochemical analysis (whole mount) of zebrafish embryo, using smarcb1a (GTx124337) antibody at 1:200 dilution.



GTx124337 WB Image

Sample (10 ug of whole cell lysate)
A: adult zebrafish
10% SDS PAGE
GTx124337 diluted at 1:1000



GTx124337 IHC-P Image

Immunohistochemical analysis of paraffin-embedded zebrafish tissue, using smarcb1a (GTx124337) antibody at 1:300 dilution.



For full product information, images and publications, please visit our [website](https://www.genetex.com).