

Tubg1 antibody

Cat. No. GTX124352

Host	Rabbit
Clonality	Polyclonal
Isotype	IgG
Applications	WB, IHC-P, IHC-Fr, IHC-Wm, IHC
Reactivity	Zebrafish

References (1)

Package

100 µl, 25 µl

Applications

Application Note

*Optimal dilutions/concentrations should be determined by the researcher.

Suggested dilution	Recommended dilution
WB	1:500-1:3000
IHC-P	1:100-1:1000
IHC-Fr	Assay dependent
IHC-Wm	1:100-1:500
IHC	1:100-1:1000

Not tested in other applications.

Properties

Form	Liquid
Buffer	PBS, 20% Glycerol
Preservative	0.01% Thimerosal
Storage	Store as concentrated solution. Centrifuge briefly prior to opening vial. For short-term storage (1-2 weeks), store at 4°C. For long-term storage, aliquot and store at -20°C or below. Avoid multiple freeze-thaw cycles.
Concentration	1 mg/ml (Please refer to the vial label for the specific concentration.)
Immunogen	The immunogen used to generate this antibody corresponds to zebrafish Tubg1
Purification	Purified by antigen-affinity chromatography.
Conjugation	Unconjugated

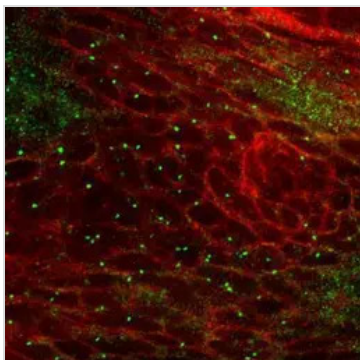
Note

For laboratory research use only. Not for any clinical, therapeutic, or diagnostic use in humans or animals. Not for animal or human consumption.

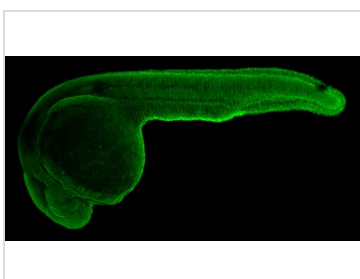
Purchasers shall not, and agree not to enable third parties to, analyze, copy, reverse engineer or otherwise attempt to determine the structure or sequence of the product.

For full product information, images and publications, please visit our [website](#).

DATA IMAGES

**GTX124352 IHC Image**

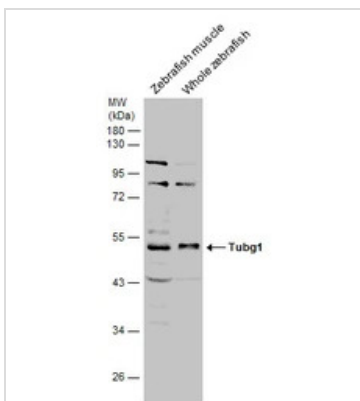
Immunohistochemical analysis of agarose-embedded zebrafish embryo, using tubg1 (GTX124352) antibody at 1:100 dilution. (This image was provided courtesy of the Schilling Lab at UC, Irvine.)

**GTX124352 IHC-Wm Image**

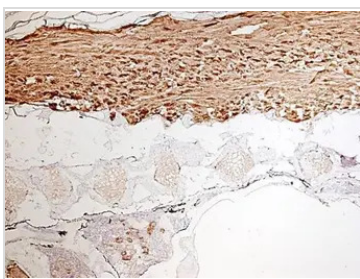
Tubg1 antibody detects Tubg1 protein on whole mount zebrafish by immunohistochemical analysis.

Sample: 1 day-post-fertilization zebrafish embryo.

Tubg1 antibody (GTX124352) dilution: 1:100.

**GTX124352 WB Image**

Various tissue extracts (30 μ g) were separated by 10% SDS-PAGE, and the membrane was blotted with Tubg1 antibody (GTX124352) diluted at 1:1000. The HRP-conjugated anti-rabbit IgG antibody (GTX213110-01) was used to detect the primary antibody.

**GTX124352 IHC-P Image**

Immunohistochemical analysis of paraffin-embedded sections of zebrafish neurons, using tubg1 (GTX124352) antibody at 1:300 dilution.



For full product information, images and publications, please visit our [website](#).