

## EMAP II antibody

**Cat. No. GTX12442**

<b>Host</b>	Goat
<b>Clonality</b>	Polyclonal
<b>Isotype</b>	IgG
<b>Applications</b>	WB, ELISA, Sandwich ELISA
<b>Reactivity</b>	Human

**Package**  
50 µg

## Applications

**Application Note**

\*Optimal dilutions/concentrations should be determined by the researcher.

Suggested dilution	Recommended dilution
WB	0.1 - 0.2 µg/mL
ELISA	0.5 µg/mL
Sandwich ELISA	0.5 - 2.0 µg/ml

**Note : Capture : GTX12442, Detection : Biotinylated Anti-Human EMAP-II antibody**

Not tested in other applications.

**Calculated MW** 34 kDa. ([Note](#))

## Properties

<b>Form</b>	Liquid
<b>Buffer</b>	PBS
<b>Preservative</b>	No preservatives
<b>Storage</b>	Store as concentrated solution. Centrifuge briefly prior to opening vial. For short-term storage (1-2 weeks), store at 4°C. For long-term storage, aliquot and store at -20°C or below. Avoid multiple freeze-thaw cycles.
<b>Concentration</b>	Batch dependent (Please refer to the vial label for the specific concentration.)
<b>Immunogen</b>	Produced from sera of goats pre-immunized with highly pure (>98%) recombinant hEMAP-II (human EMAP-II).
<b>Purification</b>	Purified by antigen-affinity chromatography
<b>Conjugation</b>	Unconjugated

**Note**

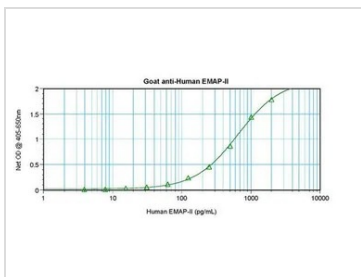
For laboratory research use only. Not for any clinical, therapeutic, or diagnostic use in humans or animals. Not for animal or human consumption.

Purchasers shall not, and agree not to enable third parties to, analyze, copy, reverse engineer or otherwise attempt to determine the structure or sequence of the product.



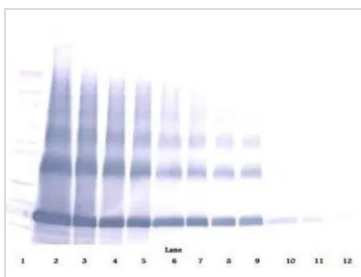
For full product information, images and publications, please visit our [website](#).

DATA IMAGES



**GTX12442 ELISA Image**

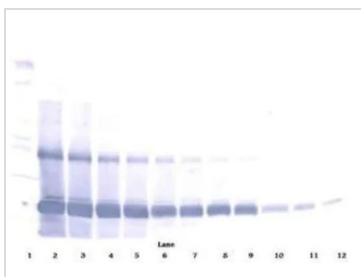
ELISA analysis of human EMAP-II recombinant protein(0.2 - 0.4 ng/well) using GTX12442 EMAP II antibody(capture antibody) at 0.5 - 2.0 ug/ml and Biotinylated Anti-Human EMAP-II as a detection antibody.



**GTX12442 WB Image**

WB analysis of sequential diluted human EMAP-II recombinant protein under either reducing or non-reducing conditions using GTX12442 EMAP II antibody.

Working concentration : 0.1 - 0.2 ug/ml



**GTX12442 WB Image**

WB analysis of sequential diluted human EMAP-II recombinant protein under either reducing or non-reducing conditions using GTX12442 EMAP II antibody.

Working concentration : 0.1 - 0.2 ug/ml



For full product information, images and publications, please visit our [website](#).