

Lcp1 antibody

Cat. No. GTX124420

Host	Rabbit
Clonality	Polyclonal
Isotype	IgG
Applications	IHC-P, IHC-Fr, IHC-Wm
Reactivity	Zebrafish

References (30)

★★★★★ Review (1)

Package

100 µl, 25 µl

Applications

Application Note

*Optimal dilutions/concentrations should be determined by the researcher.

Suggested dilution	Recommended dilution
IHC-P	1:100-1:1000
IHC-Fr	Assay dependent
IHC-Wm	1:100-1:500

Not tested in other applications.

Properties

Form	Liquid
Buffer	PBS, 20% Glycerol
Preservative	0.025% ProClin 300
Storage	Store as concentrated solution. Centrifuge briefly prior to opening vial. For short-term storage (1-2 weeks), store at 4°C. For long-term storage, aliquot and store at -20°C or below. Avoid multiple freeze-thaw cycles.
Concentration	1.26 mg/ml (Please refer to the vial label for the specific concentration.)
Immunogen	The immunogen used to generate this antibody corresponds to zebrafish Lcp1
Purification	Purified by antigen-affinity chromatography.
Conjugation	Unconjugated

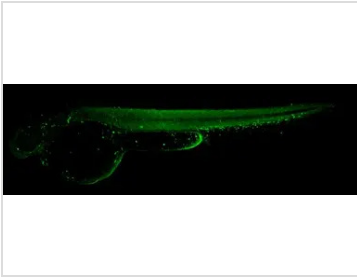
Note

For laboratory research use only. Not for any clinical, therapeutic, or diagnostic use in humans or animals. Not for animal or human consumption.

Purchasers shall not, and agree not to enable third parties to, analyze, copy, reverse engineer or otherwise attempt to determine the structure or sequence of the product.

For full product information, images and publications, please visit our [website](#).

DATA IMAGES



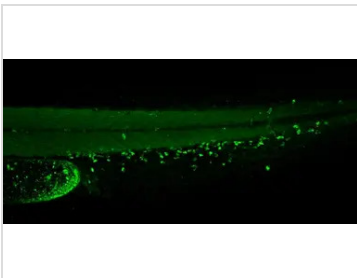
GTx124420 IHC-Wm Image

Lcp1 antibody detects Lcp1 protein on whole mount zebrafish by immunohistochemical analysis.

Sample: Paraformaldehyde-fixed 2 days-post-fertilization zebrafish embryo.

Green: Lcp1 stained by Lcp1 antibody (GTx124420) diluted at 1:100.

Antigen Retrieval: Tris-HCl buffer, pH 9.0, 20 min at 70°C



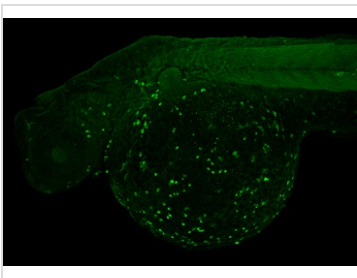
GTx124420 IHC-Wm Image

Lcp1 antibody detects Lcp1 protein on whole mount zebrafish by immunohistochemical analysis.

Sample: Paraformaldehyde-fixed 2 days-post-fertilization zebrafish embryo.

Green: Lcp1 stained by Lcp1 antibody (GTx124420) diluted at 1:100.

Antigen Retrieval: Tris-HCl buffer, pH 9.0, 20 min at 70°C

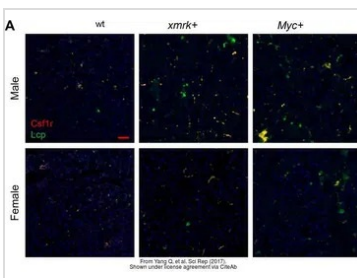


GTx124420 IHC-Wm Image

Lcp1 antibody detects Lcp1 protein on whole mount zebrafish by immunohistochemical analysis.

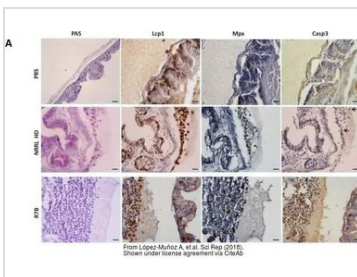
Sample: 2 day-post-fertilization zebrafish embryo.

Lcp1 antibody (GTx124420) dilution: 1:100.



GTx124420 IHC-P Image

The data was published in the journal Sci Rep in 2017. [PMID: 28871112](https://doi.org/10.1038/s41598-017-08888-8)



GTx124420 Image

The data was published in the journal Sci Rep in 2018. [PMID: 30143654](https://doi.org/10.1038/s41598-018-28888-8)



For full product information, images and publications, please visit our [website](https://www.genetex.com).