

Sox2 antibody

Cat. No. GTX124477

Host	Rabbit
Clonality	Polyclonal
Isotype	IgG
Applications	WB, ICC/IF, IHC-Fr, IHC-Wm
Reactivity	Zebrafish, Japanese Medaka

References (20)

★★★★☆ Review (1)

Package

100 µl, 25 µl

Applications

Application Note

*Optimal dilutions/concentrations should be determined by the researcher.

Suggested dilution	Recommended dilution
WB	Assay dependent
ICC/IF	Assay dependent
IHC-Fr	1:100-1:1000
IHC-Wm	1:50-1:500

Not tested in other applications.

Calculated MW 35 kDa. ([Note](#))

Properties

Form	Liquid
Buffer	PBS, 20% Glycerol
Preservative	0.025% ProClin 300
Storage	Store as concentrated solution. Centrifuge briefly prior to opening vial. For short-term storage (1-2 weeks), store at 4°C. For long-term storage, aliquot and store at -20°C or below. Avoid multiple freeze-thaw cycles.
Concentration	1.41 mg/ml (Please refer to the vial label for the specific concentration.)
Immunogen	The immunogen used to generate this antibody corresponds to zebrafish Sox2.
Purification	Purified by antigen-affinity chromatography.
Conjugation	Unconjugated

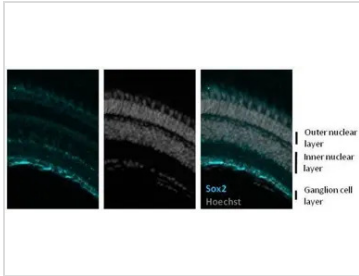
Note

For laboratory research use only. Not for any clinical, therapeutic, or diagnostic use in humans or animals. Not for animal or human consumption.

Purchasers shall not, and agree not to enable third parties to, analyze, copy, reverse engineer or otherwise attempt to determine the structure or sequence of the product.

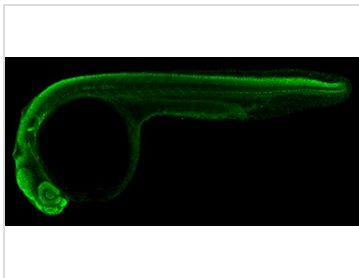
For full product information, images and publications, please visit our [website](#).

DATA IMAGES



GTX124477 IHC-Fr Image

Immunohistochemical analysis of frozen sections of zebrafish retina, using sox2 (GTX124477) antibody at 1:1000 dilution.



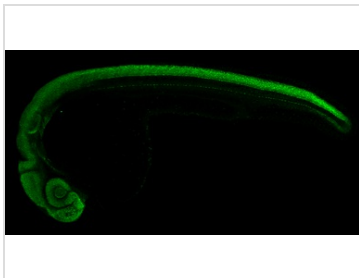
GTX124477 IHC-Wm Image

Sox2 antibody detects Sox2 protein on zebrafish by whole mount immunohistochemical analysis.
Sample: 1 day-post-fertilization zebrafish embryo.
Sox2 antibody (GTX124477) dilution: 1:50.



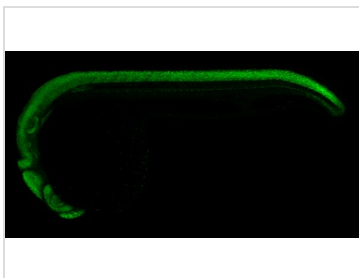
GTX124477 IHC-Wm Image

Sox2 antibody detects Sox2 protein on whole mount zebrafish by immunohistochemical analysis.
Sample: 1 day-post-fertilization zebrafish embryo.
Sox2 antibody (GTX124477) dilution: 1:100.



GTX124477 IHC-Wm Image

Sox2 antibody detects Sox2 protein on zebrafish by whole mount immunohistochemical analysis.
Sample: 1 day-post-fertilization zebrafish embryo.
Sox2 antibody (GTX124477) dilution: 1:100.



GTX124477 IHC-Wm Image

Sox2 antibody detects Sox2 protein on zebrafish by whole mount immunohistochemical analysis.
Sample: 1 day-post-fertilization zebrafish embryo.
Sox2 antibody (GTX124477) dilution: 1:100.



For full product information, images and publications, please visit our [website](https://www.genetex.com).