

## Cox4i1 antibody

Cat. No. GTX124479

|              |                   |
|--------------|-------------------|
| Host         | Rabbit            |
| Clonality    | Polyclonal        |
| Isotype      | IgG               |
| Applications | WB, IHC-P, IHC-Wm |
| Reactivity   | Zebrafish         |

References ( 1 )

Package

100 µl, 25 µl

## Applications

## Application Note

\*Optimal dilutions/concentrations should be determined by the researcher.

| Suggested dilution | Recommended dilution |
|--------------------|----------------------|
| WB                 | 1:500-1:3000         |
| IHC-P              | 1:100-1:1000         |
| IHC-Wm             | 1:100-1:500          |

Not tested in other applications.

## Properties

|               |  |
|---------------|--|
| Form          | Liquid   |
| Buffer        | 0.1M Tris, 0.1M Glycine, 10% Glycerol  |
| Preservative  | 0.01% Thimerosal   |
| Storage       | Store as concentrated solution. Centrifuge briefly prior to opening vial. For short-term storage (1-2 weeks), store at 4°C. For long-term storage, aliquot and store at -20°C or below. Avoid multiple freeze-thaw cycles. |
| Concentration | 0.38 mg/ml (Please refer to the vial label for the specific concentration.)  |
| Immunogen     | The immunogen used to generate this antibody corresponds to zebrafish Cox4i1   |
| Purification  | Purified by antigen-affinity chromatography.   |
| Conjugation   | Unconjugated   |

## Note

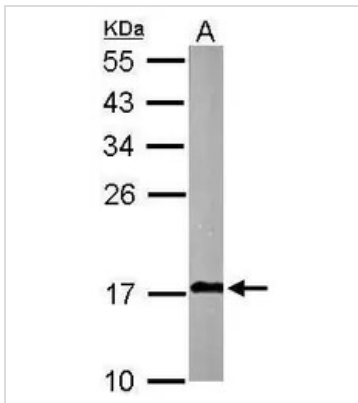
For laboratory research use only. Not for any clinical, therapeutic, or diagnostic use in humans or animals. Not for animal or human consumption.

Purchasers shall not, and agree not to enable third parties to, analyze, copy, reverse engineer or otherwise attempt to determine the structure or sequence of the product.



For full product information, images and publications, please visit our [website](#).

## DATA IMAGES



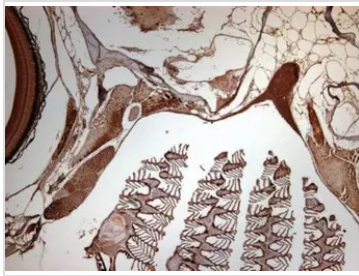
### GTx124479 WB Image

Sample (10 ug of whole cell lysate)

A: Adult zebrafish

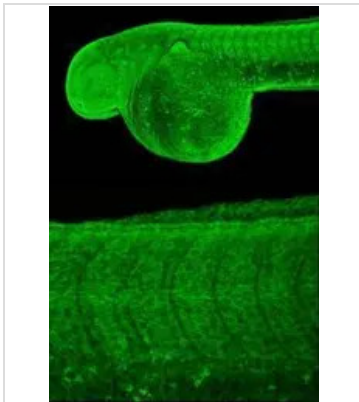
12% SDS PAGE

GTx124479 diluted at 1:1000



### GTx124479 IHC-P Image

Immunohistochemical analysis of paraffin-embedded zebrafish tissue, using cox4i1 (GTx124479) antibody at 1:300 dilution.



### GTx124479 IHC-Wm Image

Immunohistochemical analysis (whole mount) of zebrafish embryo, using cox4i1 (GTx124479) antibody at 1:200 dilution.



For full product information, images and publications, please visit our [website](https://www.genetex.com).