

# Ctnnb1 antibody

**Cat. No. GTX124481**

<b>Host</b>	Rabbit
<b>Clonality</b>	Polyclonal
<b>Isotype</b>	IgG
<b>Application</b>	WB, IHC-P, IHC-Wm, IHC
<b>Reactivity</b>	Zebrafish

**Package**  
100 µl, 25 µl

## APPLICATION

### Application Note

\*Optimal dilutions/concentrations should be determined by the researcher.

Suggested dilution	Recommended dilution
WB	1:500-1:3000
IHC-P	1:100-1:1000
IHC-Wm	1:100-1:500
IHC	1:100-1:1000

Not tested in other applications.

**Calculated MW** 86 kDa. ( [Note](#) )

## PROPERTIES

<b>Form</b>	Liquid
<b>Buffer</b>	1XPBS (pH7), 1% BSA, 20% Glycerol
<b>Preservative</b>	0.025% ProClin 300
<b>Storage</b>	Store as concentrated solution. Centrifuge briefly prior to opening vial. For short-term storage (1-2 weeks), store at 4°C. For long-term storage, aliquot and store at -20°C or below. Avoid multiple freeze-thaw cycles.
<b>Concentration</b>	0.07 mg/ml (Please refer to the vial label for the specific concentration.)
<b>Immunogen</b>	The immunogen used to generate this antibody corresponds to zebrafish Ctnnb1
<b>Purification</b>	Purified by antigen-affinity chromatography.
<b>Conjugation</b>	Unconjugated

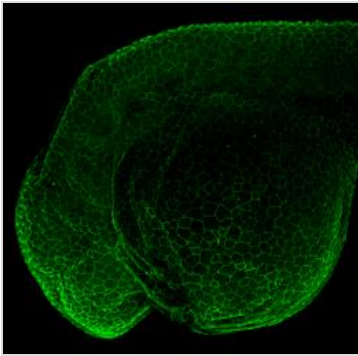
### Note

For laboratory research use only. Not for any clinical, therapeutic, or diagnostic use in humans or animals. Not for animal or human consumption.

Purchasers shall not, and agree not to enable third parties to, analyze, copy, reverse engineer or otherwise attempt to determine the structure or sequence of the product.



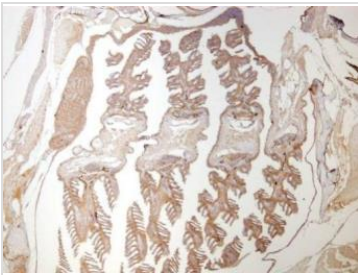
For full product information, images and publications, please visit our [website](#).

**DATA IMAGES**

**GTx124481 IHC-Wm Image**

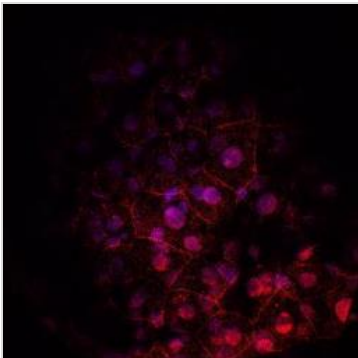
Ctnnb1 antibody detects Ctnnb1 protein on zebrafish by whole mount immunohistochemical analysis.

Sample: 1 day-post-fertilization zebrafish embryo.

Ctnnb1 antibody (GTx124481) dilution: 1:100.


**GTx124481 IHC-P Image**

Immunohistochemical analysis of paraffin-embedded zebrafish tissue, using ctnnb1 (GTx124481) antibody at 1:300 dilution.


**GTx124481 IHC Image**

Immunohistochemical analysis of agarose-embedded zebrafish embryo, using ctnnb1 (GTx124481) antibody at 1:100. dilution. (This image was provided courtesy of the Schilling Lab at UC, Irvine.)


**GTx124481 IHC-Wm Image**

Ctnnb1 antibody detects Ctnnb1 protein on zebrafish by whole mount immunohistochemical analysis.

Sample: 2 days-post-fertilization zebrafish embryo.

Ctnnb1 antibody (GTx124481) dilution: 1:100.



For full product information, images and publications, please visit our [website](#).