

# Acta1b antibody

**Cat. No. GTX124484**

<b>Host</b>	Rabbit
<b>Clonality</b>	Polyclonal
<b>Isotype</b>	IgG
<b>Application</b>	WB, IHC-P, IHC-Wm, IHC
<b>Reactivity</b>	Zebrafish

**Package**  
100 µl, 25 µl

## APPLICATION

### Application Note

\*Optimal dilutions/concentrations should be determined by the researcher.

Suggested dilution	Recommended dilution
WB	1:500-1:3000
IHC-P	1:100-1:1000
IHC-Wm	1:50-1:500
IHC	1:100-1:1000

Not tested in other applications.

## PROPERTIES

<b>Form</b>	Liquid
<b>Buffer</b>	PBS, 20% Glycerol
<b>Preservative</b>	0.025% ProClin 300
<b>Storage</b>	Store as concentrated solution. Centrifuge briefly prior to opening vial. For short-term storage (1-2 weeks), store at 4°C. For long-term storage, aliquot and store at -20°C or below. Avoid multiple freeze-thaw cycles.
<b>Concentration</b>	0.81 mg/ml (Please refer to the vial label for the specific concentration.)
<b>Immunogen</b>	The immunogen used to generate this antibody corresponds to zebrafish Acta1b
<b>Purification</b>	Purified by antigen-affinity chromatography.
<b>Conjugation</b>	Unconjugated

### Note

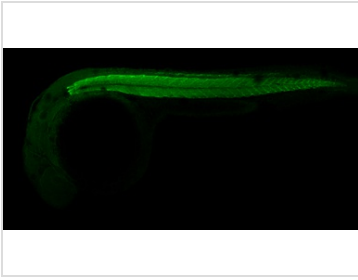
For laboratory research use only. Not for any clinical, therapeutic, or diagnostic use in humans or animals. Not for animal or human consumption.

Purchasers shall not, and agree not to enable third parties to, analyze, copy, reverse engineer or otherwise attempt to determine the structure or sequence of the product.



For full product information, images and publications, please visit our [website](#).

## DATA IMAGES

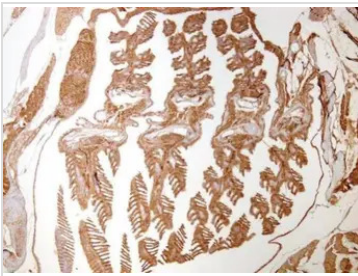


### GTX124484 IHC-Wm Image

Acta1b antibody detects Acta1b protein on zebrafish by whole mount immunohistochemical analysis.

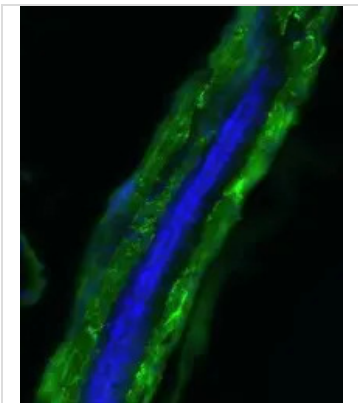
Sample: 1 day-post-fertilization zebrafish embryo.

Acta1b antibody (GTX124484) dilution: 1:50.



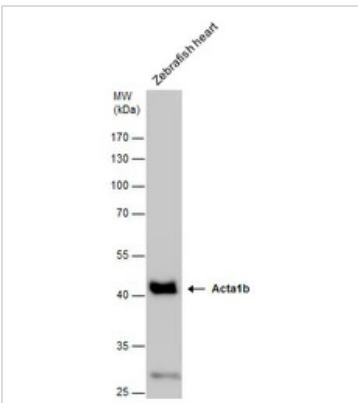
### GTX124484 IHC-P Image

Immunohistochemical analysis of paraffin-embedded zebrafish tissue, using acta1b (GTX124484) antibody at 1:300 dilution.



### GTX124484 IHC Image

Immunohistochemical analysis of agarose-embedded zebrafish embryo tail section, using acta1b (GTX124484) antibody at 1:200 dilution.



### GTX124484 WB Image

Acta1b antibody detects Acta1b protein by Western blot analysis. Zebrafish tissue extracts (30 µg) was separated by 10 % SDS-PAGE, and the membrane was blotted with Acta1b antibody (GTX101362) at a dilution of 1:1000.



For full product information, images and publications, please visit our [website](https://www.genetex.com).