

## Acta2 antibody

Cat. No. GTX124505

Host	Rabbit
Clonality	Polyclonal
Isotype	IgG
Applications	WB, IHC-P, IHC-Fr, IHC-Wm
Reactivity	Human, Zebrafish

References ( 9 )

Package

100 µl, 25 µl

## Applications

## Application Note

\*Optimal dilutions/concentrations should be determined by the researcher.

Suggested dilution	Recommended dilution
WB	1:5000-1:20000
IHC-P	1:100-1:1000
IHC-Fr	Assay dependent
IHC-Wm	1:100-1:500

Not tested in other applications.

## Properties

Form	Liquid
Buffer	PBS, 20% Glycerol
Preservative	0.025% ProClin 300
Storage	Store as concentrated solution. Centrifuge briefly prior to opening vial. For short-term storage (1-2 weeks), store at 4°C. For long-term storage, aliquot and store at -20°C or below. Avoid multiple freeze-thaw cycles.
Concentration	1.3 mg/ml (Please refer to the vial label for the specific concentration.)
Immunogen	The immunogen used to generate this antibody corresponds to zebrafish Acta2
Purification	Purified by antigen-affinity chromatography.
Conjugation	Unconjugated

## Note

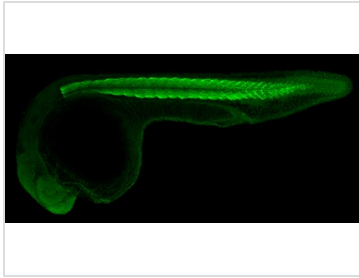
For laboratory research use only. Not for any clinical, therapeutic, or diagnostic use in humans or animals. Not for animal or human consumption.

Purchasers shall not, and agree not to enable third parties to, analyze, copy, reverse engineer or otherwise attempt to determine the structure or sequence of the product.



For full product information, images and publications, please visit our [website](#).

## DATA IMAGES

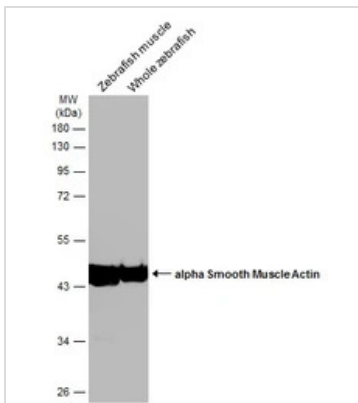


### GTX124505 IHC-Wm Image

Acta2 antibody detects Acta2 protein on zebrafish by whole mount immunohistochemical analysis.

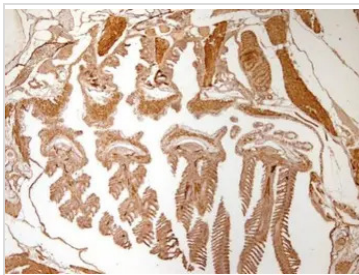
Sample: 1 day-post-fertilization zebrafish embryo.

Acta2 antibody (GTX124505) dilution: 1:100.



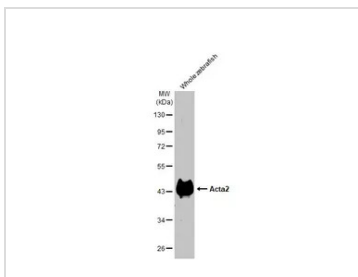
### GTX124505 WB Image

Various tissue extracts (30 µg) were separated by 10% SDS-PAGE, and the membrane was blotted with alpha Smooth Muscle Actin antibody (GTX124505) diluted at 1:10000. The HRP-conjugated anti-rabbit IgG antibody (GTX213110-01) was used to detect the primary antibody.



### GTX124505 IHC-P Image

Immunohistochemical analysis of paraffin-embedded zebrafish tissue, using Acta2 (GTX124505) antibody at 1:300 dilution.



### GTX124505 WB Image

Whole zebrafish extract (30 µg) was separated by 10% SDS-PAGE, and the membrane was blotted with Acta2 antibody (GTX124505) diluted at 1:1000. The HRP-conjugated anti-rabbit IgG antibody (GTX213110-01) was used to detect the primary antibody.



For full product information, images and publications, please visit our [website](https://www.genetex.com).