

# GPR40 antibody

**Cat. No. GTX12570**

<b>Host</b>	Rabbit
<b>Clonality</b>	Polyclonal
<b>Isotype</b>	IgG
<b>Application</b>	WB, IHC-P
<b>Reactivity</b>	Human, Monkey

**Package**

25 µg

## APPLICATION

### Application Note

\*Optimal dilutions/concentrations should be determined by the researcher.

Suggested dilution	Recommended dilution
WB	Assay dependent
IHC-P	9 - 18 µg/ml

Not tested in other applications.

**Calculated MW** 31 kDa. ( [Note](#) )

## PROPERTIES

<b>Form</b>	Liquid
<b>Buffer</b>	PBS
<b>Preservative</b>	0.1% Sodium azide
<b>Storage</b>	Store as concentrated solution. Centrifuge briefly prior to opening vial. For short-term storage (1-2 weeks), store at 4°C. For long-term storage, aliquot and store at -20°C or below. Avoid multiple freeze-thaw cycles.
<b>Concentration</b>	1 mg/ml (Please refer to the vial label for the specific concentration.)
<b>Immunogen</b>	Synthetic 18 amino acid peptide from C-terminus of human GPR40.
<b>Purification</b>	Purified by affinity chromatography
<b>Conjugation</b>	Unconjugated

### Note

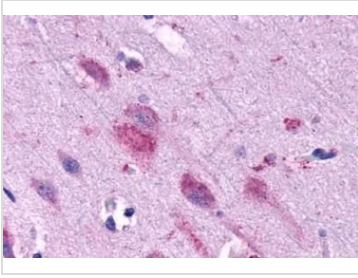
For laboratory research use only. Not for any clinical, therapeutic, or diagnostic use in humans or animals. Not for animal or human consumption.

Purchasers shall not, and agree not to enable third parties to, analyze, copy, reverse engineer or otherwise attempt to determine the structure or sequence of the product.

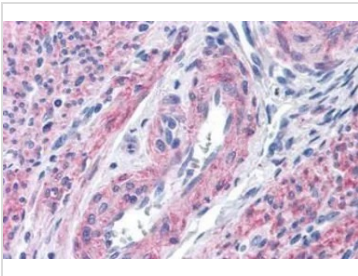


For full product information, images and publications, please visit our [website](#).

## DATA IMAGES

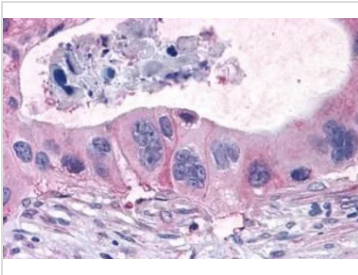

**GTX12570 IHC-P Image**

IHC-P analysis of brain, cortex tissue using GTX12570 GPR40 antibody.


**GTX12570 IHC-P Image**

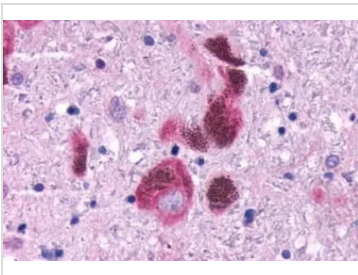
IHC-P analysis of human uterus tissue using GTX12570 GPR40 antibody.

Antigen retrieval : Heat-induced antigen retrieval

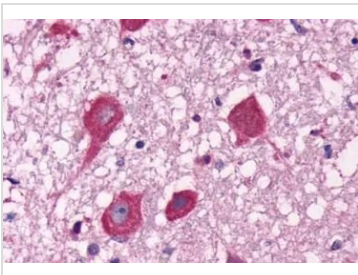

**GTX12570 IHC-P Image**

IHC-P analysis of human pancreas, carcinoma tissue using GTX12570 GPR40 antibody.

Antigen retrieval : Heat-induced antigen retrieval


**GTX12570 IHC-P Image**

IHC-P analysis of brain, parkinson's disease tissue using GTX12570 GPR40 antibody.


**GTX12570 IHC-P Image**

IHC-P analysis of human brain, neurons tissue using GTX12570 GPR40 antibody.

Antigen retrieval : Heat-induced antigen retrieval



For full product information, images and publications, please visit our [website](https://www.genetex.com).