

Renilla Luciferase antibody

Cat. No. GTX125851

Host	Rabbit
Clonality	Polyclonal
Isotype	IgG
Applications	WB, ICC/IF, IHC-Wm
Reactivity	Renilla reniformis

References (13)

Package

100 µl, 25 µl

Applications

Application Note

*Optimal dilutions/concentrations should be determined by the researcher.

Suggested dilution	Recommended dilution
WB	1:500-1:3000
ICC/IF	Assay dependent
IHC-Wm	Assay dependent

Not tested in other applications.

Calculated MW 36 kDa. ([Note](#))

Properties

Form	Liquid
Buffer	PBS, 20% Glycerol
Preservative	0.025% ProClin 300
Storage	Store as concentrated solution. Centrifuge briefly prior to opening vial. For short-term storage (1-2 weeks), store at 4°C. For long-term storage, aliquot and store at -20°C or below. Avoid multiple freeze-thaw cycles.
Concentration	1.14 mg/ml (Please refer to the vial label for the specific concentration.)
Immunogen	Full length Renilla Luciferase recombinant protein
Purification	Purified by antigen-affinity chromatography.
Conjugation	Unconjugated

Note

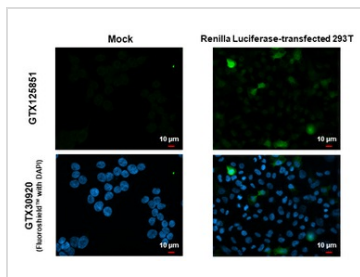
For laboratory research use only. Not for any clinical, therapeutic, or diagnostic use in humans or animals. Not for animal or human consumption.

Purchasers shall not, and agree not to enable third parties to, analyze, copy, reverse engineer or otherwise attempt to determine the structure or sequence of the product.



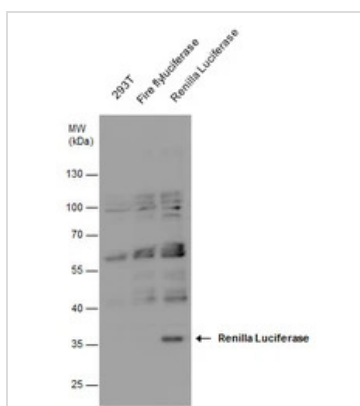
For full product information, images and publications, please visit our [website](#).

DATA IMAGES



GTX125851 ICC/IF Image

Renilla Luciferase antibody detects Renilla Luciferase protein by immunofluorescent analysis. Sample: Mock and transfected 293T cells were fixed in 4% paraformaldehyde at RT for 15 min. Green: Renilla Luciferase stained by Renilla Luciferase antibody (GTX125851) diluted at 1:500. Blue: Fluoroshield with DAPI (GTX30920).



GTX125851 WB Image

Renilla Luciferase antibody detects Renilla Luciferase protein by Western blot analysis. Non-transfected (-) and Renilla Luciferase -transfected (+,) 293T whole cell extracts (30 μg) were separated by 10% SDS-PAGE, and the membrane was blotted with Renilla Luciferase antibody (GTX125851) at a dilution of 1:2000.



For full product information, images and publications, please visit our [website](https://www.genetex.com).