

## Japanese encephalitis virus Core protein C antibody

**Cat. No. GTX125860**

<b>Host</b>	Rabbit
<b>Clonality</b>	Polyclonal
<b>Isotype</b>	IgG
<b>Applications</b>	WB
<b>Reactivity</b>	Japanese encephalitis virus

**Package**  
100 µl, 25 µl

## Applications

**Application Note**

\*Optimal dilutions/concentrations should be determined by the researcher.

Suggested dilution	Recommended dilution
WB	1:500-1:3000

Not tested in other applications.

## Properties

<b>Form</b>	Liquid
<b>Buffer</b>	PBS, 20% Glycerol
<b>Preservative</b>	0.025% ProClin 300
<b>Storage</b>	Store as concentrated solution. Centrifuge briefly prior to opening vial. For short-term storage (1-2 weeks), store at 4°C. For long-term storage, aliquot and store at -20°C or below. Avoid multiple freeze-thaw cycles.
<b>Concentration</b>	0.02 mg/ml (Please refer to the vial label for the specific concentration.)
<b>Immunogen</b>	Full length Japanese encephalitis virus Core protein C Recombinant protein (Japanese Encephalitis Virus strain Jaoars982)
<b>Purification</b>	Purified by antigen-affinity chromatography.
<b>Conjugation</b>	Unconjugated

**Note**

For laboratory research use only. Not for any clinical, therapeutic, or diagnostic use in humans or animals. Not for animal or human consumption.

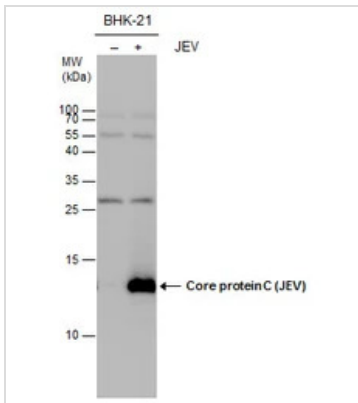
Purchasers shall not, and agree not to enable third parties to, analyze, copy, reverse engineer or otherwise attempt to determine the structure or sequence of the product.



For full product information, images and publications, please visit our [website](#).

Date 2026 / 01 / 06 Page 1 of 2

## DATA IMAGES



### GTX125860 WB Image

Core protein C (JEV) antibody detects Core protein C (JEV) protein by western blot analysis. Un-infected (-) and infected (+, JEV infection) BHK-21 whole cell extracts (20 µg) were separated by 15% SDS-PAGE, and the membrane was blotted with Core protein C (JEV) antibody (GTX125860) at a dilution of 1:1000.



For full product information, images and publications, please visit our [website](#).