

Japanese encephalitis virus NS1 antibody

Cat. No. GTX125866

Host	Rabbit
Clonality	Polyclonal
Isotype	IgG
Applications	WB, ICC/IF
Reactivity	Japanese encephalitis virus

Package
100 µl, 25 µl

Applications

Application Note

*Optimal dilutions/concentrations should be determined by the researcher.

Suggested dilution	Recommended dilution
WB	1:5000-1:50000
ICC/IF	1:100-1:2000

Not tested in other applications.

Calculated MW 40 kDa. ([Note](#))

Properties

Form	Liquid
Buffer	0.1M Tris, 0.1M Glycine, 20% Glycerol
Preservative	0.01% Thimerosal
Storage	Store as concentrated solution. Centrifuge briefly prior to opening vial. For short-term storage (1-2 weeks), store at 4°C. For long-term storage, aliquot and store at -20°C or below. Avoid multiple freeze-thaw cycles.
Concentration	0.57 mg/ml (Please refer to the vial label for the specific concentration.)
Immunogen	Full length Japanese encephalitis virus JEV NS1 Recombinant protein (Japanese Encephalitis Virus strain Jaoars982)
Purification	Purified by antigen-affinity chromatography.
Conjugation	Unconjugated

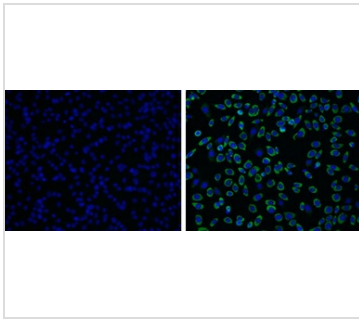
Note

For laboratory research use only. Not for any clinical, therapeutic, or diagnostic use in humans or animals. Not for animal or human consumption.

Purchasers shall not, and agree not to enable third parties to, analyze, copy, reverse engineer or otherwise attempt to determine the structure or sequence of the product.



For full product information, images and publications, please visit our [website](#).

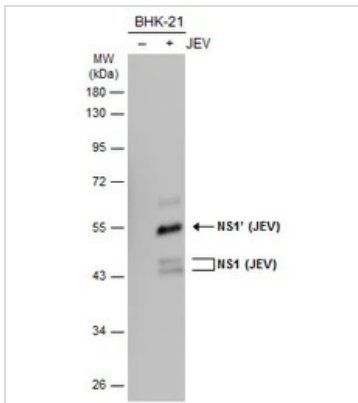
DATA IMAGES

GTXT125866 ICC/IF Image

Non-structural protein NS1 (Japanese encephalitis virus) antibody detects non-structural protein NS1 (Japanese encephalitis virus) protein by immunofluorescent analysis.

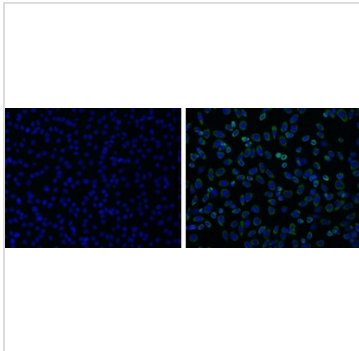
Samples: BHK-21 cells mock (left) and infected with Japanese encephalitis virus were fixed in MeOH.

Green: non-structural protein NS1 (Japanese encephalitis virus) protein stained by Non-structural protein NS1 (Japanese encephalitis virus) antibody (GTXT125866) diluted at 1:2000.

Blue: Hoechst 33342 staining.


GTXT125866 WB Image

Non-infected (-) and infected (+) BHK-21 whole cell extracts (30 µg) were separated by 10% SDS-PAGE, and the membrane was blotted with NS1 (JEV) antibody (GTXT125866) diluted at 1:50000. The HRP-conjugated anti-rabbit IgG antibody (GTXT213110-01) was used to detect the primary antibody.


GTXT125866 ICC/IF Image

Non-structural protein NS1 (Japanese encephalitis virus) antibody detects non-structural protein NS1 (Japanese encephalitis virus) protein by immunofluorescent analysis.

Samples: BHK-21 cells mock (left) and infected with Japanese encephalitis virus were fixed in paraformaldehyde.

Green: non-structural protein NS1 (Japanese encephalitis virus) protein stained by Non-structural protein NS1 (Japanese encephalitis virus) antibody (GTXT125866) diluted at 1:2000.

Blue: Hoechst 33342 staining.



For full product information, images and publications, please visit our [website](https://www.genetex.com).