

Japanese encephalitis virus NS3 antibody

Cat. No. GTX125868

| | |
|---------------------|-----------------------------|
| Host | Rabbit |
| Clonality | Polyclonal |
| Isotype | IgG |
| Applications | WB, ICC/IF, IHC-P, IHC-Fr |
| Reactivity | Japanese encephalitis virus |

References (33)

Package

100 µl, 25 µl

Applications

Application Note

*Optimal dilutions/concentrations should be determined by the researcher.

| Suggested dilution | Recommended dilution |
|--------------------|----------------------|
| WB | 1:5000-1:20000 |
| ICC/IF | 1:100-1:2000 |
| IHC-P | Assay dependent |
| IHC-Fr | Assay dependent |

Not tested in other applications.

Calculated MW 69 kDa. ([Note](#))

Properties

| | |
|----------------------|--|
| Form | Liquid |
| Buffer | PBS, 20% Glycerol |
| Preservative | 0.025% ProClin 300 |
| Storage | Store as concentrated solution. Centrifuge briefly prior to opening vial. For short-term storage (1-2 weeks), store at 4°C. For long-term storage, aliquot and store at -20°C or below. Avoid multiple freeze-thaw cycles. |
| Concentration | 1.45 mg/ml (Please refer to the vial label for the specific concentration.) |
| Immunogen | Recombinant protein encompassing a sequence within the center region of NS3 (JEV). (Japanese Encephalitis Virus strain Jaoars982) The exact sequence is proprietary. |
| Purification | Purified by antigen-affinity chromatography. |
| Conjugation | Unconjugated |

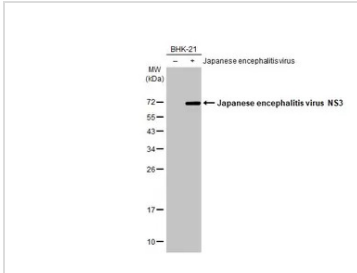


For full product information, images and publications, please visit our [website](#).

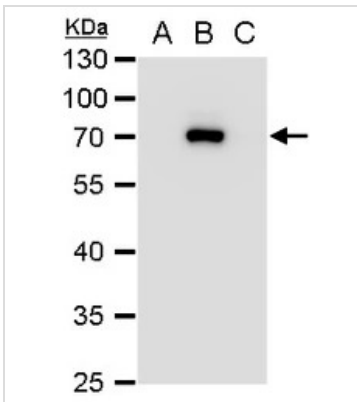
For laboratory research use only. Not for any clinical, therapeutic, or diagnostic use in humans or animals. Not for animal or human consumption.

Note

Purchasers shall not, and agree not to enable third parties to, analyze, copy, reverse engineer or otherwise attempt to determine the structure or sequence of the product.

DATA IMAGES

GTX125868 WB Image

Non-infected (–) and infected (+) BHK-21 whole cell extract (5 µg) were separated by 12% SDS-PAGE, and the membrane was blotted with Japanese encephalitis virus NS3 antibody (GTX125868) diluted at 1:10000. The HRP-conjugated anti-rabbit IgG antibody (GTX213110-01) was used to detect the primary antibody.


GTX125868 WB Image

NS3 (Japanese encephalitis virus) antibody detects NS3 (Japanese encephalitis virus) protein by western blot analysis.

A. 10 µg BHK-21 whole cell extract

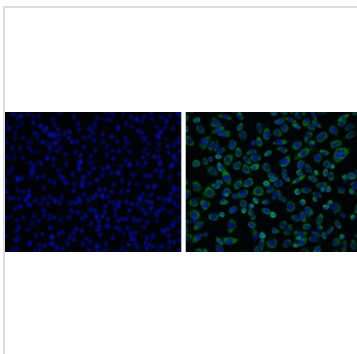
B. 10 µg whole cell extract of Japanese encephalitis virus infected BHK-21 cells

C. 10 µg whole cell extract of Dengue virus type 2 infected BHK-21 cells

10% SDS-PAGE

NS3 (Japanese encephalitis virus) antibody (GTX125868) dilution: 1:10000

The HRP-conjugated anti-rabbit IgG antibody (GTX213110-01) was used to detect the primary antibody.


GTX125868 ICC/IF Image

NS3 (Japanese encephalitis virus) antibody detects NS3 (Japanese encephalitis virus) protein by immunofluorescent analysis.

Samples: BHK-21 cells mock (left) and infected with Japanese encephalitis virus (right) were fixed in paraformaldehyde.

Green: NS3 (Japanese encephalitis virus) protein stained by NS3 (Japanese encephalitis virus) antibody (GTX125868) diluted at 1:2000.

Blue: Hoechst 33342 staining.



For full product information, images and publications, please visit our [website](https://www.genetex.com).