

## Thbs4b antibody

**Cat. No. GTX125870**

<b>Host</b>	Rabbit
<b>Clonality</b>	Polyclonal
<b>Isotype</b>	IgG
<b>Applications</b>	WB, IHC-Wm
<b>Reactivity</b>	Zebrafish

**Package**  
100 µl, 25 µl

## Applications

**Application Note**

\*Optimal dilutions/concentrations should be determined by the researcher.

Suggested dilution	Recommended dilution
WB	1:500-1:3000
IHC-Wm	1:100-1:500

Not tested in other applications.

**Calculated MW** 104 kDa. ([Note](#))

## Properties

<b>Form</b>	Liquid
<b>Buffer</b>	0.1M Tris, 0.1M Glycine, 20% Glycerol
<b>Preservative</b>	0.01% Thimerosal
<b>Storage</b>	Store as concentrated solution. Centrifuge briefly prior to opening vial. For short-term storage (1-2 weeks), store at 4°C. For long-term storage, aliquot and store at -20°C or below. Avoid multiple freeze-thaw cycles.
<b>Concentration</b>	1 mg/ml (Please refer to the vial label for the specific concentration.)
<b>Immunogen</b>	Recombinant protein encompassing a sequence within the N-terminus region of zebrafish Thbs4b. The exact sequence is proprietary.
<b>Purification</b>	Purified by antigen-affinity chromatography.
<b>Conjugation</b>	Unconjugated

**Note**

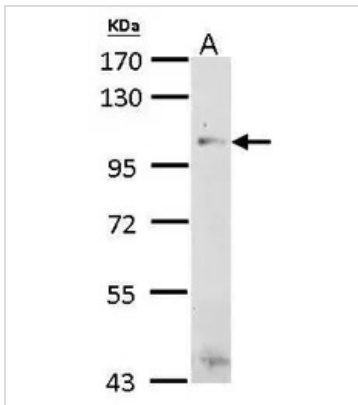
For laboratory research use only. Not for any clinical, therapeutic, or diagnostic use in humans or animals. Not for animal or human consumption.

Purchasers shall not, and agree not to enable third parties to, analyze, copy, reverse engineer or otherwise attempt to determine the structure or sequence of the product.



For full product information, images and publications, please visit our [website](#).

## DATA IMAGES

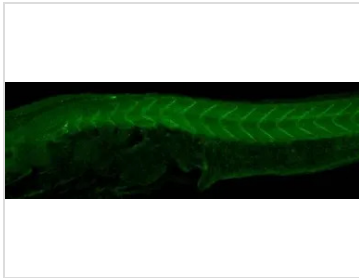
**GTX125870 WB Image**

Thbs4b antibody detects thbs4b protein by Western blot analysis.

A. 30  $\mu$ g zebrafish muscle lysate/extract

7.5 % SDS-PAGE

Thbs4b antibody (GTX125870) dilution: 1:500

**GTX125870 IHC-Wm Image**

Thbs4b antibody detects Thbs4b protein on somite boundary by immunohistochemical analysis Sample:

Whole-mount zebrafish embryo Thbs4b antibody (GTX125870) dilution: 1:200.



For full product information, images and publications, please visit our [website](#).