

Cdh2 antibody

Cat. No. GTX125885

Host	Rabbit
Clonality	Polyclonal
Isotype	IgG
Applications	WB, IHC-Fr, IHC-Wm
Reactivity	Zebrafish

References (14)

Package

100 µl, 25 µl

Applications

Application Note

*Optimal dilutions/concentrations should be determined by the researcher.

Suggested dilution	Recommended dilution
WB	1:500-1:3000
IHC-Fr	Assay dependent
IHC-Wm	1:100-1:500

Not tested in other applications.

Calculated MW 99 kDa. ([Note](#))

Properties

Form	Liquid
Buffer	PBS, 20% Glycerol
Preservative	0.025% ProClin 300
Storage	Store as concentrated solution. Centrifuge briefly prior to opening vial. For short-term storage (1-2 weeks), store at 4°C. For long-term storage, aliquot and store at -20°C or below. Avoid multiple freeze-thaw cycles.
Concentration	0.63 mg/ml (Please refer to the vial label for the specific concentration.)
Immunogen	Recombinant protein encompassing a sequence within the center region of zebrafish Cdh2. The exact sequence is proprietary.
Purification	Purified by antigen-affinity chromatography.
Conjugation	Unconjugated

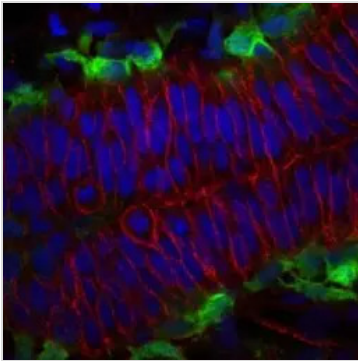
Note

For laboratory research use only. Not for any clinical, therapeutic, or diagnostic use in humans or animals. Not for animal or human consumption.

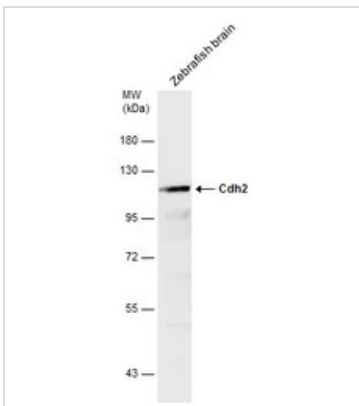
Purchasers shall not, and agree not to enable third parties to, analyze, copy, reverse engineer or otherwise attempt to determine the structure or sequence of the product.



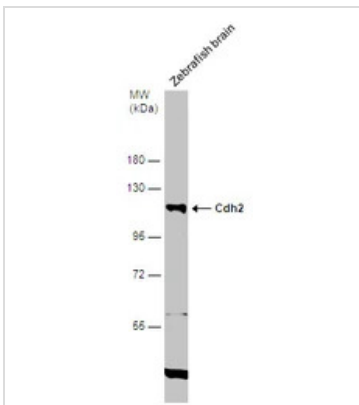
For full product information, images and publications, please visit our [website](#).

DATA IMAGES

GTx125885 IHC-Wm Image

Cdh2 antibody detects Cdh2 protein on cell membranes by immunohistochemical analysis Sample: Agarose-embedded zebrafish embryo Cdh2 antibody (GTx125885) dilution: 1:200. Image provided with permission courtesy of Dr. T. Schilling at UC, Irvine.


GTx125885 WB Image

Zebrafish tissue extract (30 µg) was separated by 7.5% SDS-PAGE, and the membrane was blotted with Cdh2 antibody (GTx125885) diluted at 1:1000.


GTx125885 WB Image

Zebrafish tissue extract (30 µg) was separated by 7.5% SDS-PAGE, and the membrane was blotted with Cdh2 antibody (GTx125885) diluted at 1:2000.



For full product information, images and publications, please visit our [website](https://www.genetex.com).