

TET1 antibody [N1], N-term

Cat. No. GTX125888

Host	Rabbit
Clonality	Polyclonal
Isotype	IgG
Application	WB, ICC/IF, IHC-P, IHC-Wm, IP, ChIP assay
Reactivity	Mouse

Reference (18)

Package

100 µl

APPLICATION

Application Note

*Optimal dilutions/concentrations should be determined by the researcher.

Suggested dilution	Recommended dilution
WB	1:500-1:20000
ICC/IF	1:100-1:1000
IHC-P	Assay dependent
IHC-Wm	Assay dependent
IP	Assay dependent
ChIP assay	Assay dependent

Not tested in other applications.

Calculated MW 219 kDa. ([Note](#))

Product Note Knockdown/Knockout validation was supported by references (PMID: 29513657)

PROPERTIES

Form	Liquid
Buffer	PBS, 20% Glycerol
Preservative	0.025% ProClin 300
Storage	Store as concentrated solution. Centrifuge briefly prior to opening vial. For short-term storage (1-2 weeks), store at 4°C. For long-term storage, aliquot and store at -20°C or below. Avoid multiple freeze-thaw cycles.
Concentration	1 mg/ml (Please refer to the vial label for the specific concentration.)
Immunogen	Recombinant protein encompassing a sequence within the N-terminus region of mouse TET1. The exact sequence is proprietary.
Purification	Purified by antigen-affinity chromatography.



For full product information, images and publications, please visit our [website](#).

Conjugation

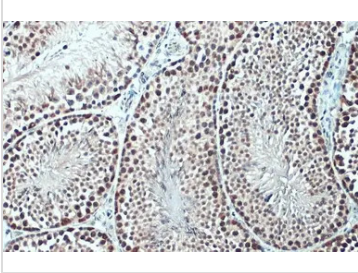
Unconjugated

For laboratory research use only. Not for any clinical, therapeutic, or diagnostic use in humans or animals. Not for animal or human consumption.

Note

Purchasers shall not, and agree not to enable third parties to, analyze, copy, reverse engineer or otherwise attempt to determine the structure or sequence of the product.

DATA IMAGES



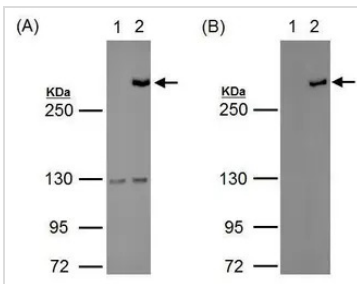
GTx125888 IHC-P Image

TET1 antibody [N1], N-term detects TET1 protein at nucleus by immunohistochemical analysis.

Sample: Paraffin-embedded mouse testis.

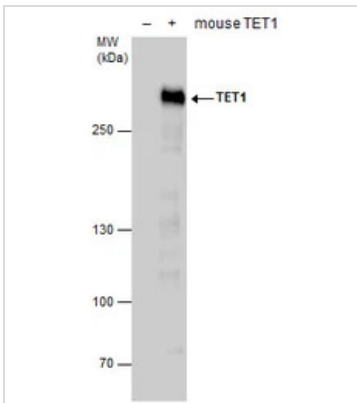
TET1 stained by TET1 antibody [N1], N-term (GTx125888) diluted at 1:500.

Antigen Retrieval: Citrate buffer, pH 6.0, 15 min



GTx125888 WB Image

Western blot analysis of 293T cell are mock transfected (lane1) or with tagged-mTet1 (lane 2) for 24hrs, using either GTx125888 (diluted at 1:2000) (A) or anti-tag (B) antibody. The HRP-conjugated anti-rabbit IgG antibody (GTx213110-01) was used to detect the primary antibody.



GTx125888 WB Image

TET1 antibody detects TET1 protein by western blot analysis. Non-transfected (-) and mouse TET1-transfected (+, including DDDDK-tag) 293T whole cell extracts (30 µg) were separated by 5% SDS-PAGE, and the membrane was blotted with TET1 antibody (GTx125888) at a dilution of 1:20000. The HRP-conjugated anti-rabbit IgG antibody (GTx213110-01) was used to detect the primary antibody.



For full product information, images and publications, please visit our [website](https://www.genetex.com).