

Paxillin antibody

Cat. No. GTX125891

Host	Rabbit
Clonality	Polyclonal
Isotype	IgG
Applications	WB, ICC/IF, IHC-P, IP
Reactivity	Human, Mouse, Rat

References (21)

★★★★★ Review (2)

Package

100 µl, 25 µl

Applications

Application Note

*Optimal dilutions/concentrations should be determined by the researcher.

Suggested dilution	Recommended dilution
WB	1:500-1:20000
ICC/IF	1:100-1:1000
IHC-P	1:100-1:1000
IP	1:100-1:500

Not tested in other applications.

Calculated MW 65 kDa. ([Note](#))

Properties

Form	Liquid
Buffer	PBS, 1% BSA, 20% Glycerol
Preservative	0.025% ProClin 300
Storage	Store as concentrated solution. Centrifuge briefly prior to opening vial. For short-term storage (1-2 weeks), store at 4°C. For long-term storage, aliquot and store at -20°C or below. Avoid multiple freeze-thaw cycles.
Concentration	0.48 mg/ml (Please refer to the vial label for the specific concentration.)
Immunogen	Recombinant protein encompassing a sequence within the center region of human Paxillin. The exact sequence is proprietary.
Purification	Purified by antigen-affinity chromatography.
Conjugation	Unconjugated



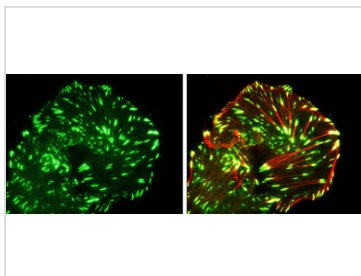
For full product information, images and publications, please visit our [website](#).

For laboratory research use only. Not for any clinical, therapeutic, or diagnostic use in humans or animals. Not for animal or human consumption.

Note

Purchasers shall not, and agree not to enable third parties to, analyze, copy, reverse engineer or otherwise attempt to determine the structure or sequence of the product.

DATA IMAGES



GTX125891 ICC/IF Image

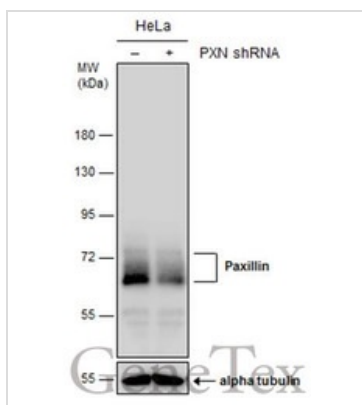
Paxillin antibody detects Paxillin protein at cytoskeleton by immunofluorescent analysis.

Sample: MDA-MB-231 cells were fixed in 4% paraformaldehyde at RT for 15 min.

Green: Paxillin protein stained by Paxillin antibody (GTX125891) diluted at 1:100.

Red: phalloidin staining.

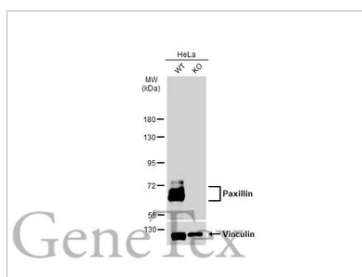
Courtesy of a researcher who prefers to be anonymous.



GTX125891 WB Image

Non-transfected (-) and transfected (+) HeLa whole cell extracts (30 μ g) were separated by 7.5% SDS-PAGE,

and the membrane was blotted with Paxillin antibody (GTX125891) diluted at 1:6000. The HRP-conjugated anti-rabbit IgG antibody (GTX213110-01) was used to detect the primary antibody.



GTX125891 WB Image

Wild-type (WT) and Paxillin knockout (KO) HeLa cell extracts (30 μ g) were separated by 7.5% SDS-PAGE,

and the membrane was blotted with Paxillin antibody (GTX125891) diluted at 1:10000. The HRP-conjugated anti-rabbit IgG antibody (GTX213110-01) was used to detect the primary antibody.



For full product information, images and publications, please visit our [website](https://www.genetex.com).