

Galectin 3 antibody

Cat. No. GTX125897

Host	Rabbit
Clonality	Polyclonal
Isotype	IgG
Application	WB, IHC-P, IHC-Fr, ELISA, Sandwich ELISA
Reactivity	Human, Mouse, Rat

Reference (7)

★★★★★ Review (3)

Package

100 µl, 25 µl

APPLICATION

Application Note

*Optimal dilutions/concentrations should be determined by the researcher.

Suggested dilution	Recommended dilution
WB	1:500-1:3000
IHC-P	1:100-1:1000
IHC-Fr	Assay dependent
ELISA	Assay dependent
Sandwich ELISA	Assay dependent

Note : Capture : GTX635156, Detection: GTX125897

Not tested in other applications.

Calculated MW 26 kDa. ([Note](#))

PROPERTIES

Form	Liquid
Buffer	PBS, 20% Glycerol
Preservative	0.01% Thimerosal
Storage	Store as concentrated solution. Centrifuge briefly prior to opening vial. For short-term storage (1-2 weeks), store at 4°C. For long-term storage, aliquot and store at -20°C or below. Avoid multiple freeze-thaw cycles.
Concentration	1 mg/ml (Please refer to the vial label for the specific concentration.)
Immunogen	Recombinant protein encompassing a sequence within the C-terminus region of human Galectin 3. The exact sequence is proprietary.
Purification	Purified by antigen-affinity chromatography.
Conjugation	Unconjugated



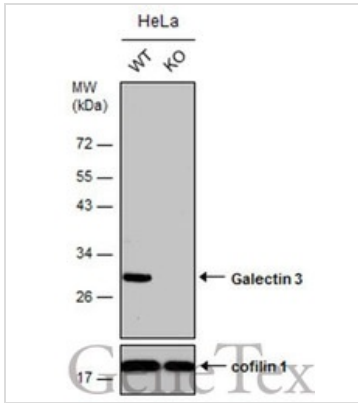
For full product information, images and publications, please visit our [website](#).

For laboratory research use only. Not for any clinical, therapeutic, or diagnostic use in humans or animals. Not for animal or human consumption.

Note

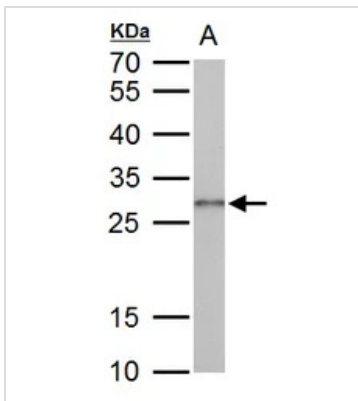
Purchasers shall not, and agree not to enable third parties to, analyze, copy, reverse engineer or otherwise attempt to determine the structure or sequence of the product.

DATA IMAGES



GTx125897 WB Image

Wild-type (WT) and Galectin 3 knockout (KO) HeLa cell extracts (30 µg) were separated by 12% SDS-PAGE, and the membrane was blotted with Galectin 3 antibody (GTx125897) diluted at 1:500. The HRP-conjugated anti-rabbit IgG antibody (GTx213110-01) was used to detect the primary antibody, and the signal was developed with Trident ECL plus-Enhanced.



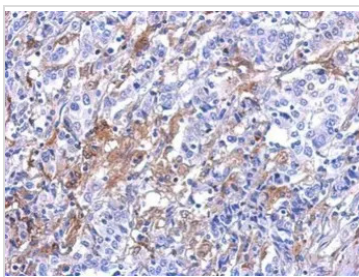
GTx125897 WB Image

Galectin3 antibody detects Galectin3 protein by western blot analysis.

A. 50 µg rat colon lysate/extract

12 % SDS-PAGE

Galectin3 antibody (GTx125897) dilution: 1:1000



GTx125897 IHC-P Image

Immunohistochemical analysis of paraffin-embedded human gastric cancer, using Galectin3 antibody (GTx125897) at 1:200 dilution.

Antigen Retrieval: Trilogy™ (EDTA based, pH 8.0) buffer, 15min



For full product information, images and publications, please visit our [website](https://www.genetex.com).