

## Influenza A virus PB1 protein antibody

Cat. No. GTX125923

Host	Rabbit
Clonality	Polyclonal
Isotype	IgG
Application	WB, ICC/IF
Reactivity	Influenza A virus

Reference ( 56 )

★★★★★ Review ( 2 )

Package

100 µl, 25 µl

## APPLICATION

## Application Note

\*Optimal dilutions/concentrations should be determined by the researcher.

Suggested dilution	Recommended dilution
WB	1:500-1:3000
ICC/IF	1:100-1:1000

Not tested in other applications.

Calculated MW 87 kDa. ( [Note](#) )

## PROPERTIES

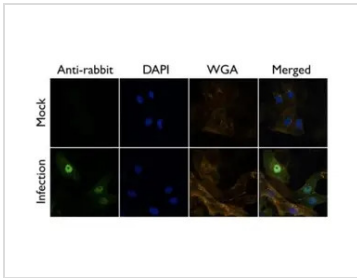
Form	Liquid
Buffer	PBS, 1% BSA, 20% Glycerol
Preservative	0.025% ProClin 300
Storage	Store as concentrated solution. Centrifuge briefly prior to opening vial. For short-term storage (1-2 weeks), store at 4°C. For long-term storage, aliquot and store at -20°C or below. Avoid multiple freeze-thaw cycles.
Concentration	0.2 mg/ml (Please refer to the vial label for the specific concentration.)
Immunogen	Recombinant protein encompassing a sequence within the N-terminus region of Influenza A virus PB1 (A/Puerto Rico/8/1934(H1N1)). The exact sequence is proprietary.
Purification	Purified by antigen-affinity chromatography.
Conjugation	Unconjugated
Note	<p>For laboratory research use only. Not for any clinical, therapeutic, or diagnostic use in humans or animals. Not for animal or human consumption.</p> <p>Purchasers shall not, and agree not to enable third parties to, analyze, copy, reverse engineer or otherwise attempt to determine the structure or sequence of the product.</p>



For full product information, images and publications, please visit our [website](#).

Date 2024 / 05 / 05 Page 1 of 2

DATA IMAGES



**GTx125923 ICC/IF Image**

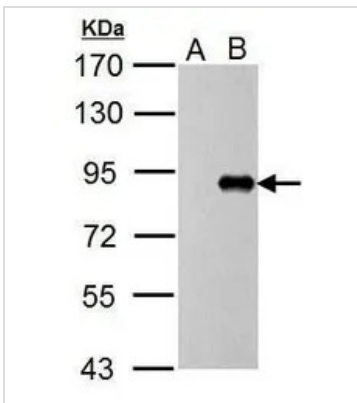
Influenza A Virus PB1 antibody detects PB1 protein at by immunofluorescent analysis.

Sample: A/WSN/33 infected Vero cells were fixed in 4% paraformaldehyde at RT for 20 min.

Green: PB1 protein stained by Influenza A Virus PB1 antibody (GTx125923) diluted at 1:500.

Blue: DAPI staining.

Yellow: WGA life stained at 37°C, 30 min.



**GTx125923 WB Image**

Influenza A Virus PB1 antibody detects protein by western blot analysis.

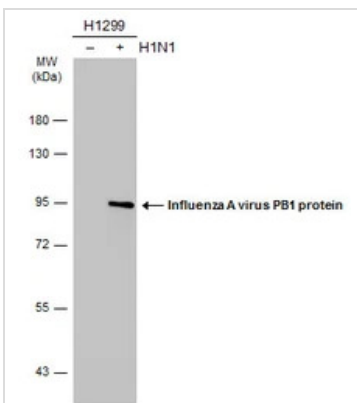
A. 5 µg DF1 whole cell lysate/extract (untreated)

B. 5 µg DF1 whole cell lysate/extract (WSN virus treatment for 10hr)

7.5% SDS-PAGE

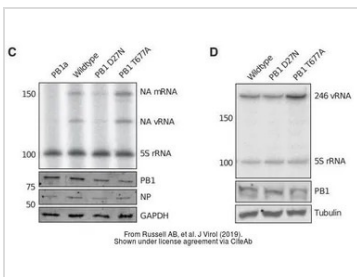
Influenza A Virus PB1 antibody (GTx125923) dilution: 1:1000

The HRP-conjugated anti-rabbit IgG antibody (GTx213110-01) was used to detect the primary antibody.



**GTx125923 WB Image**

Non-infected (-) and infected (+) H1299 whole cell extracts (5 µg) were separated by 7.5% SDS-PAGE, and the membrane was blotted with Influenza A virus PB1 protein antibody (GTx125923) diluted at 1:1000. The HRP-conjugated anti-rabbit IgG antibody (GTx213110-01) was used to detect the primary antibody.



**GTx125923 WB Image**

The data was published in the journal J Virol in 2019. [PMID: 31068418](https://pubmed.ncbi.nlm.nih.gov/31068418/)



For full product information, images and publications, please visit our [website](https://www.genetex.com).