

Influenza A virus PB2 protein antibody

Cat. No. GTX125925

Host	Rabbit
Clonality	Polyclonal
Isotype	IgG
Application	WB, ICC/IF
Reactivity	Influenza A virus

Reference (9)

Package

100 µl, 25 µl

APPLICATION

Application Note

*Optimal dilutions/concentrations should be determined by the researcher.

Suggested dilution	Recommended dilution
WB	1:1000-1:10000
ICC/IF	1:100-1:1000

Not tested in other applications.

Calculated MW 86 kDa. ([Note](#))

PROPERTIES

Form	Liquid
Buffer	PBS, 20% Glycerol
Preservative	0.01% Thimerosal
Storage	Store as concentrated solution. Centrifuge briefly prior to opening vial. For short-term storage (1-2 weeks), store at 4°C. For long-term storage, aliquot and store at -20°C or below. Avoid multiple freeze-thaw cycles.
Concentration	1 mg/ml (Please refer to the vial label for the specific concentration.)
Immunogen	Recombinant protein encompassing a sequence within the N-terminus region of Influenza A virus PB2 (A/Puerto Rico/8/1934(H1N1)). The exact sequence is proprietary.
Purification	Purified by antigen-affinity chromatography.
Conjugation	Unconjugated

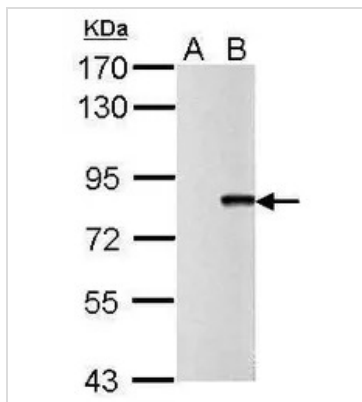
Note

For laboratory research use only. Not for any clinical, therapeutic, or diagnostic use in humans or animals. Not for animal or human consumption.

Purchasers shall not, and agree not to enable third parties to, analyze, copy, reverse engineer or otherwise attempt to determine the structure or sequence of the product.



For full product information, images and publications, please visit our [website](#).

DATA IMAGES

GTX125925 WB Image

Sample (50 µg of whole cell lysate)

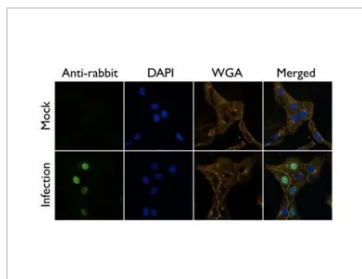
A: mock DF-1 cell lysates

B: WSN-infected DF-1 cell lysates

7.5% SDS PAGE

GTX125925 diluted at 1:5000

The HRP-conjugated anti-rabbit IgG antibody (GTX213110-01) was used to detect the primary antibody.


GTX125925 ICC/IF Image

Influenza A Virus PB2 antibody detects PB2 protein at by immunofluorescent analysis.

Sample: A/WSN/33 infected Vero cells were fixed in 4% paraformaldehyde at RT for 20 min.

Green: PB2 protein stained by Influenza A Virus PB2 antibody (GTX125925) diluted at 1:500.

Blue: DAPI staining.

Yellow: WGA life stained at 37°C, 30 min.



For full product information, images and publications, please visit our [website](https://www.genetex.com).