

Influenza A virus PB2 protein antibody

Cat. No. GTX125926

| | |
|--------------|-------------------|
| Host | Rabbit |
| Clonality | Polyclonal |
| Isotype | IgG |
| Applications | WB, ICC/IF, IP |
| Reactivity | Influenza A virus |

References (92)

★★★★★ Review (2)

Package

100 µl, 25 µl

Applications

Application Note

*Optimal dilutions/concentrations should be determined by the researcher.

| Suggested dilution | Recommended dilution |
|--------------------|----------------------|
| WB | 1:1000-1:10000 |
| ICC/IF | 1:100-1:1000 |
| IP | Assay dependent |

Not tested in other applications.

Calculated MW 86 kDa. ([Note](#))

Product Note KO/KD validation is based on published data (PMID: 36271046).

Properties

| | |
|---------------|--|
| Form | Liquid |
| Buffer | PBS, 1% BSA, 20% Glycerol |
| Preservative | 0.025% ProClin 300 |
| Storage | Store as concentrated solution. Centrifuge briefly prior to opening vial. For short-term storage (1-2 weeks), store at 4°C. For long-term storage, aliquot and store at -20°C or below. Avoid multiple freeze-thaw cycles. |
| Concentration | 0.39 mg/ml (Please refer to the vial label for the specific concentration.) |
| Immunogen | Recombinant protein encompassing a sequence within the C-terminus region of Influenza A virus PB2 (A/Puerto Rico/8/1934(H1N1)). The exact sequence is proprietary. |
| Purification | Purified by antigen-affinity chromatography. |
| Conjugation | Unconjugated |



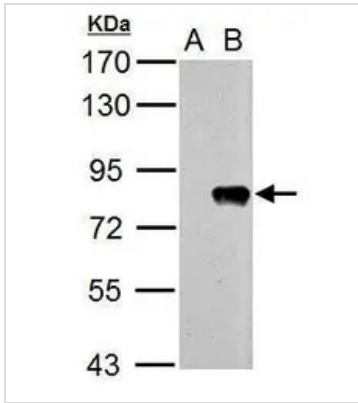
For full product information, images and publications, please visit our [website](#).

Date 2026 / 02 / 02 Page 1 of 2

For laboratory research use only. Not for any clinical, therapeutic, or diagnostic use in humans or animals. Not for animal or human consumption.

Note

Purchasers shall not, and agree not to enable third parties to, analyze, copy, reverse engineer or otherwise attempt to determine the structure or sequence of the product.

DATA IMAGES

GTX125926 WB Image

Sample (5 µg of whole cell lysate)

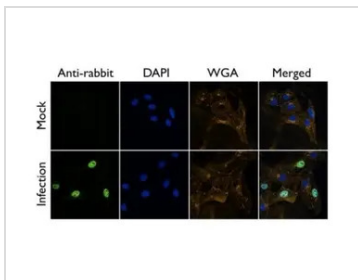
A: DF1

B: WSN virus infected DF1 10 hr

7.5% SDS PAGE

GTX125926 diluted at 1:5000

The HRP-conjugated anti-rabbit IgG antibody (GTX213110-01) was used to detect the primary antibody.


GTX125926 ICC/IF Image

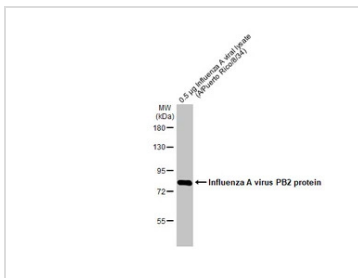
Influenza A Virus PB2 antibody detects PB2 protein at by immunofluorescent analysis.

Sample: A/WSN/33 infected Vero cells were fixed in 4% paraformaldehyde at RT for 20 min.

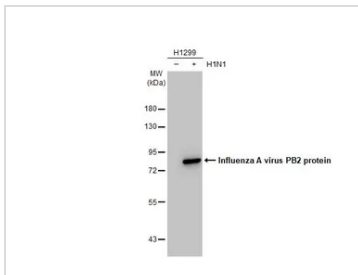
Green: PB2 protein stained by Influenza A Virus PB2 antibody (GTX125926) diluted at 1:500.

Blue: DAPI staining.

Yellow: WGA life stained at 37°C, 30 min.


GTX125926 WB Image

0.5 µg Influenza A viral lysate (0.5 µg) was separated by 7.5% SDS-PAGE, and the membrane was blotted with Influenza A virus PB2 protein antibody (GTX125926) diluted at 1:5000. The HRP-conjugated anti-rabbit IgG antibody (GTX213110-01) was used to detect the primary antibody.


GTX125926 WB Image

Non-infected (–) and infected (+) H1299 whole cell extracts (5 µg) were separated by 7.5% SDS-PAGE, and the membrane was blotted with Influenza A virus PB2 protein antibody (GTX125926) diluted at 1:5000. The HRP-conjugated anti-rabbit IgG antibody (GTX213110-01) was used to detect the primary antibody.



For full product information, images and publications, please visit our [website](https://www.genetex.com).