

## Influenza A virus PA protein antibody

Cat. No. GTX125932

Host	Rabbit
Clonality	Polyclonal
Isotype	IgG
Applications	WB, ICC/IF
Reactivity	Influenza A virus

References ( 38 )

Package

100 µl, 25 µl

## Applications

## Application Note

\*Optimal dilutions/concentrations should be determined by the researcher.

Suggested dilution	Recommended dilution
WB	1:1000-1:10000
ICC/IF	1:100-1:1000

Not tested in other applications.

Calculated MW 83 kDa. ( [Note](#) )

## Properties

Form	Liquid
Buffer	PBS, 1% BSA, 20% Glycerol
Preservative	0.025% ProClin 300
Storage	Store as concentrated solution. Centrifuge briefly prior to opening vial. For short-term storage (1-2 weeks), store at 4°C. For long-term storage, aliquot and store at -20°C or below. Avoid multiple freeze-thaw cycles.
Concentration	0.3 mg/ml (Please refer to the vial label for the specific concentration.)
Immunogen	Recombinant protein encompassing a sequence within the N-terminus region of Influenza A virus PA (A/Puerto Rico/8/1934(H1N1)). The exact sequence is proprietary.
Purification	Purified by antigen-affinity chromatography.
Conjugation	Unconjugated

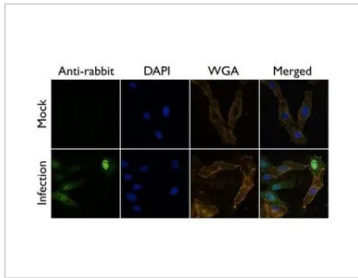
## Note

For laboratory research use only. Not for any clinical, therapeutic, or diagnostic use in humans or animals. Not for animal or human consumption.

Purchasers shall not, and agree not to enable third parties to, analyze, copy, reverse engineer or otherwise attempt to determine the structure or sequence of the product.



For full product information, images and publications, please visit our [website](#).

**DATA IMAGES**

**GTx125932 ICC/IF Image**

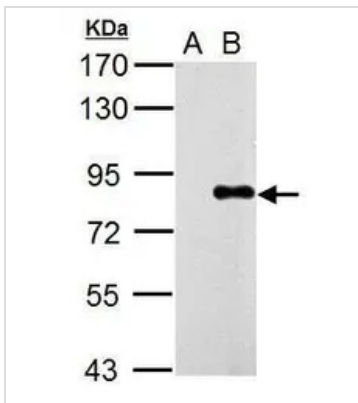
Influenza A Virus PA antibody detects PA protein at by immunofluorescent analysis.

Sample: A/WSN/33 infected Vero cells were fixed in 4% paraformaldehyde at RT for 20 min.

Green: PA protein stained by Influenza A Virus PA antibody (GTx125932) diluted at 1:500.

Blue: DAPI staining.

Yellow: WGA life stained at 37°C, 30 min.


**GTx125932 WB Image**

Sample (5 µg of whole cell lysate)

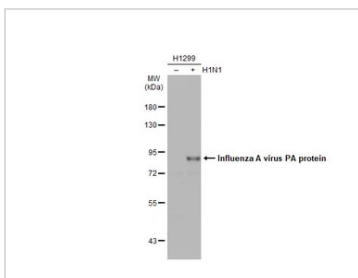
A: DF1

B: WSN virus infected DF1 10 hr

7.5% SDS PAGE

GTx125932 diluted at 1:5000

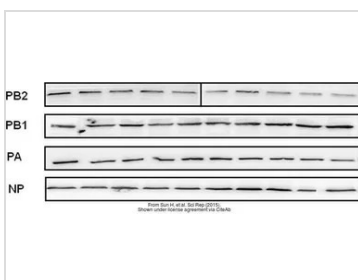
The HRP-conjugated anti-rabbit IgG antibody (GTx213110-01) was used to detect the primary antibody.


**GTx125932 WB Image**

Non-infected (-) and infected (+) H1299 whole cell extracts (15 µg) were separated by 7.5% SDS-PAGE, and

the membrane was blotted with Influenza A virus PA protein antibody (GTx125932) diluted at 1:5000. The

HRP-conjugated anti-rabbit IgG antibody (GTx213110-01) was used to detect the primary antibody.


**GTx125932 WB Image**

The data was published in the journal Sci Rep in 2015. [PMID: 26030097](https://pubmed.ncbi.nlm.nih.gov/26030097/)



For full product information, images and publications, please visit our [website](https://www.genetex.com).