

## RAD26L antibody

**Cat. No. GTX125944**

<b>Host</b>	Rabbit
<b>Clonality</b>	Polyclonal
<b>Isotype</b>	IgG
<b>Applications</b>	WB, IHC-P
<b>Reactivity</b>	Human

**Package**  
100 µl, 25 µl

## Applications

**Application Note**

\*Optimal dilutions/concentrations should be determined by the researcher.

Suggested dilution	Recommended dilution
WB	1:1000-1:10000
IHC-P	1:100-1:1000

Not tested in other applications.

**Calculated MW** 81 kDa. ([Note](#))

## Properties

<b>Form</b>	Liquid
<b>Buffer</b>	PBS, 20% Glycerol
<b>Preservative</b>	0.01% Thimerosal
<b>Storage</b>	Store as concentrated solution. Centrifuge briefly prior to opening vial. For short-term storage (1-2 weeks), store at 4°C. For long-term storage, aliquot and store at -20°C or below. Avoid multiple freeze-thaw cycles.
<b>Concentration</b>	1 mg/ml (Please refer to the vial label for the specific concentration.)
<b>Immunogen</b>	Recombinant protein encompassing a sequence within the C-terminus region of human RAD26L. The exact sequence is proprietary.
<b>Purification</b>	Purified by antigen-affinity chromatography.
<b>Conjugation</b>	Unconjugated

**Note**

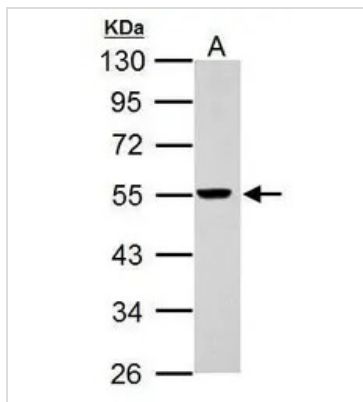
For laboratory research use only. Not for any clinical, therapeutic, or diagnostic use in humans or animals. Not for animal or human consumption.

Purchasers shall not, and agree not to enable third parties to, analyze, copy, reverse engineer or otherwise attempt to determine the structure or sequence of the product.



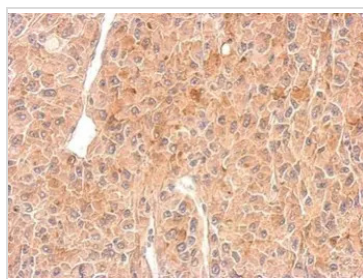
For full product information, images and publications, please visit our [website](#).

DATA IMAGES



**GTX125944 WB Image**

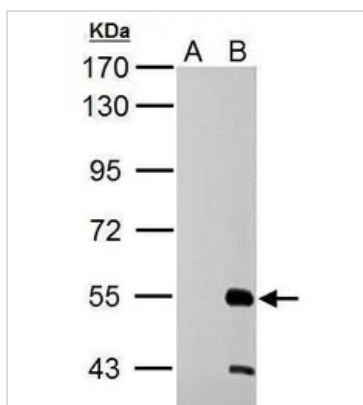
Sample (30 ug of whole cell lysate)  
 A: U87-MG  
 10% SDS PAGE  
 GTX125944 diluted at 1:1000



**GTX125944 IHC-P Image**

C9orf102 antibody detects C9orf102 protein at cytosol on U87 xenograft by immunohistochemical analysis.  
 Sample: Paraffin-embedded U87 xenograft.  
 C9orf102 antibody (GTX125944) dilution: 1:500.

Antigen Retrieval: Trilogy™ (EDTA based, pH 8.0) buffer, 15min



**GTX125944 WB Image**

Sample (30 ug of whole cell lysate)  
 A: Non-transfected 293T lysates  
 B: C9orf102 transfected 293T lysates  
 10% SDS PAGE  
 GTX125944 diluted at 1:5000



For full product information, images and publications, please visit our [website](#).