

# GABA antibody

**Cat. No. GTX125988**

<b>Host</b>	Rabbit
<b>Clonality</b>	Polyclonal
<b>Isotype</b>	IgG
<b>Application</b>	ICC/IF, IHC-P, IHC-Fr, Dot, IHC
<b>Reactivity</b>	Species independent

Reference ( 10 )

★★★★☆ Review ( 2 )

Package

100 µl, 25 µl

## APPLICATION

### Application Note

\*Optimal dilutions/concentrations should be determined by the researcher.

Suggested dilution	Recommended dilution
ICC/IF	1:100-1:1000
IHC-P	1:100-1:1000
IHC-Fr	1:100-1:1000
Dot	Assay dependent
IHC	Assay dependent

Not tested in other applications.

## PROPERTIES

<b>Form</b>	Liquid
<b>Buffer</b>	PBS, 20% Glycerol
<b>Preservative</b>	0.025% ProClin 300
<b>Storage</b>	Store as concentrated solution. Centrifuge briefly prior to opening vial. For short-term storage (1-2 weeks), store at 4°C. For long-term storage, aliquot and store at -20°C or below. Avoid multiple freeze-thaw cycles.
<b>Concentration</b>	1.71 mg/ml (Please refer to the vial label for the specific concentration.)
<b>Immunogen</b>	The immunogen used to generate this antibody corresponds to GABA
<b>Purification</b>	Purified by antigen-affinity chromatography.
<b>Conjugation</b>	Unconjugated

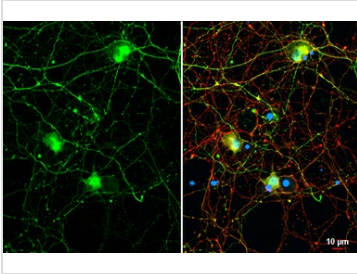
### Note

For laboratory research use only. Not for any clinical, therapeutic, or diagnostic use in humans or animals. Not for animal or human consumption.

Purchasers shall not, and agree not to enable third parties to, analyze, copy, reverse engineer or otherwise attempt to determine the structure or sequence of the product.



For full product information, images and publications, please visit our [website](#).

**DATA IMAGES**

**GTX125988 ICC/IF Image**

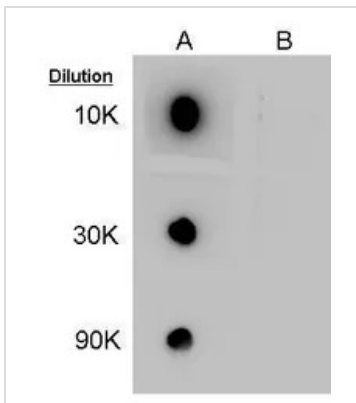
GABA antibody detects GABA protein at cell membrane by immunofluorescent analysis.

Sample: DIV9 rat E18 primary cortical neuron cells were fixed in 4% paraformaldehyde at RT for 15 min.

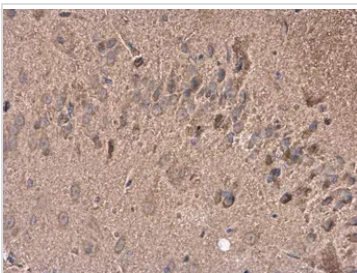
Green: GABA stained by GABA antibody (GTX125988) diluted at 1:250.

Red: Tau, a axon marker, stained by Tau antibody [GT287] (GTX634809) diluted at 1:500.

Blue: Fluoroshield with DAPI (GTX30920).


**GTX125988 Dot Image**

Dot blot analysis of 100ng of GABA-conjugated BSA, using GABA Antibody (GTX125988) at 1:10000, 1:30000, and 1:90000. A: GABA-conjugated BSA. B: Normal BSA


**GTX125988 IHC-P Image**

GABA antibody detects GABA at cytoplasm in rat brain by immunohistochemical analysis.

Sample: Paraffin-embedded rat brain.

GABA antibody (GTX125988) diluted at 1:400.

Antigen Retrieval: Citrate buffer, pH 6.0, 15 min



For full product information, images and publications, please visit our [website](https://www.genetex.com).