

Influenza A virus Nucleoprotein antibody

Cat. No. GTX125989

Host	Rabbit
Clonality	Polyclonal
Isotype	IgG
Applications	WB, ICC/IF, IHC-P, IP, ELISA, Sandwich ELISA
Reactivity	Influenza A virus

References (146)

★★★★★ Review (3)

Package

100 µl, 25 µl

Applications

Application Note

*Optimal dilutions/concentrations should be determined by the researcher.

Suggested dilution	Recommended dilution
WB	1:5000-1:20000
ICC/IF	1:100-1:1000
IHC-P	Assay dependent
IP	Assay dependent
ELISA	Assay dependent
Sandwich ELISA	Assay dependent

Note : Capture: GTX629633, Detection: GTX125989 or Capture: GTX125989, Detection: GTX629633

Not tested in other applications.

Properties

Form	Liquid
Buffer	PBS, 20% Glycerol
Preservative	0.025% ProClin 300
Storage	Store as concentrated solution. Centrifuge briefly prior to opening vial. For short-term storage (1-2 weeks), store at 4°C. For long-term storage, aliquot and store at -20°C or below. Avoid multiple freeze-thaw cycles.
Concentration	1.13 mg/ml (Please refer to the vial label for the specific concentration.)
Immunogen	Recombinant protein of Influenza A virus Nucleoprotein (A/WSN/1933(H1N1)). The exact sequence is proprietary.
Purification	Purified by antigen-affinity chromatography.
Conjugation	Unconjugated



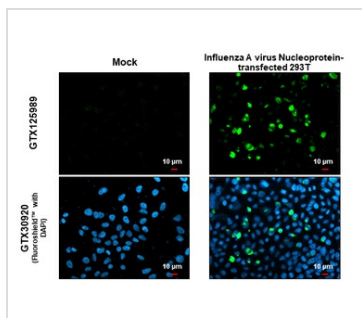
For full product information, images and publications, please visit our [website](#).

For laboratory research use only. Not for any clinical, therapeutic, or diagnostic use in humans or animals. Not for animal or human consumption.

Note

Purchasers shall not, and agree not to enable third parties to, analyze, copy, reverse engineer or otherwise attempt to determine the structure or sequence of the product.

DATA IMAGES



GTx125989 ICC/IF Image

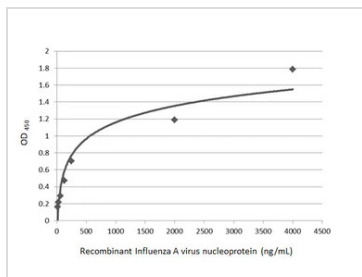
Influenza A virus Nucleoprotein antibody detects Influenza A virus Nucleoprotein protein at cytoplasm by immunofluorescent analysis.

Sample: Mock and transfected 293T cells were fixed in 4% paraformaldehyde at RT for 15 min.

Green: Influenza A virus Nucleoprotein stained by Influenza A virus Nucleoprotein antibody (GTx125989) diluted at 1:500.

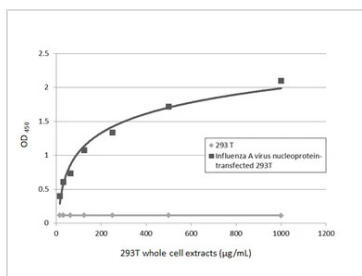
Blue: Fluoroshield with DAPI (GTx30920).

Scale bar= 10µm.



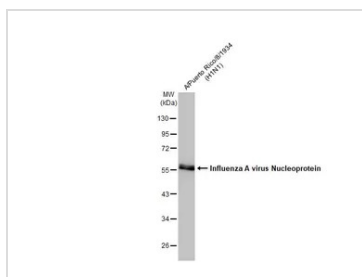
GTx125989 ELISA Image

Sandwich ELISA detection of recombinant full-length Influenza A virus NP (nucleoprotein) protein, DDDDK tag (GTx135868-pro) using Influenza A virus NP (nucleoprotein) antibody [GT1236] (GTx629633) as capture antibody at concentration of 5 µg/mL and Influenza A virus NP (nucleoprotein) antibody (GTx125989) as detection antibody at concentration of 1 µg/mL. Rabbit IgG antibody (HRP) (GTx213110-01) was diluted at 1:10000 and used to detect the primary antibody.



GTx125989 ELISA Image

Sandwich ELISA detection of non-transfected and Influenza A virus nucleoprotein transfected 293T whole cell extracts using Influenza A virus NP (nucleoprotein) antibody [GT1236] (GTx629633) as capture antibody at concentration of 5 µg/mL and Influenza A virus NP (nucleoprotein) antibody (GTx125989) as detection antibody at concentration of 1 µg/mL. Rabbit IgG antibody (HRP) (GTx213110-01) was diluted at 1:10000 and used to detect the primary antibody.



GTx125989 WB Image

Influenza A (H1N1) viral lysate (0.1 µg) was separated by 10% SDS-PAGE, and the membrane was blotted with Influenza A virus Nucleoprotein antibody (GTx125989) diluted at 1:50000. The HRP-conjugated anti-rabbit IgG antibody (GTx213110-01) was used to detect the primary antibody.



For full product information, images and publications, please visit our [website](https://www.genetex.com).