

## Influenza A virus NS1 (nonstructural protein) antibody

**Cat. No. GTX125990**

<b>Host</b>	Rabbit
<b>Clonality</b>	Polyclonal
<b>Isotype</b>	IgG
<b>Applications</b>	WB, ICC/IF, IHC-P
<b>Reactivity</b>	Influenza A virus

References ( 66 )

★★★★★ Review ( 1 )

Package

100 µl, 25 µl

## Applications

**Application Note**

\*Optimal dilutions/concentrations should be determined by the researcher.

Suggested dilution	Recommended dilution
WB	1:500-1:3000
ICC/IF	1:100-1:1000
IHC-P	Assay dependent

Not tested in other applications.

## Properties

<b>Form</b>	Liquid
<b>Buffer</b>	PBS, 1% BSA, 20% Glycerol
<b>Preservative</b>	0.025% ProClin 300
<b>Storage</b>	Store as concentrated solution. Centrifuge briefly prior to opening vial. For short-term storage (1-2 weeks), store at 4°C. For long-term storage, aliquot and store at -20°C or below. Avoid multiple freeze-thaw cycles.
<b>Concentration</b>	0.22 mg/ml (Please refer to the vial label for the specific concentration.)
<b>Immunogen</b>	Recombinant protein of Influenza A virus NS1 (nonstructural protein) (A/WSN/1933(H1N1)). The exact sequence is proprietary.
<b>Purification</b>	Purified by antigen-affinity chromatography.
<b>Conjugation</b>	Unconjugated

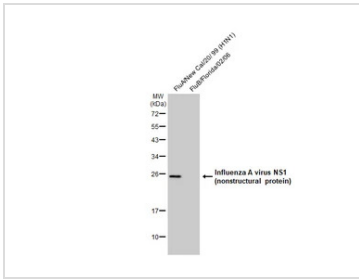
**Note**

For laboratory research use only. Not for any clinical, therapeutic, or diagnostic use in humans or animals. Not for animal or human consumption.

Purchasers shall not, and agree not to enable third parties to, analyze, copy, reverse engineer or otherwise attempt to determine the structure or sequence of the product.

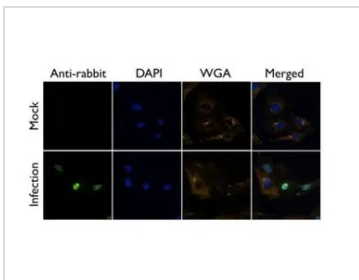
For full product information, images and publications, please visit our [website](#).

DATA IMAGES



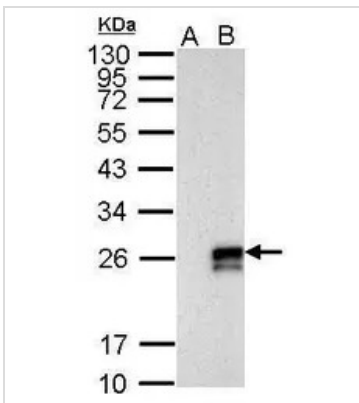
**GTX125990 WB Image**

Influenza A viral lysate and Influenza B viral lysate (0.1 µg) were separated by 12% SDS-PAGE, and the membrane was blotted with Influenza A virus NS1 (nonstructural protein) antibody (GTX125990) diluted at 1:440. The HRP-conjugated anti-rabbit IgG antibody (GTX213110-01) was used to detect the primary antibody.



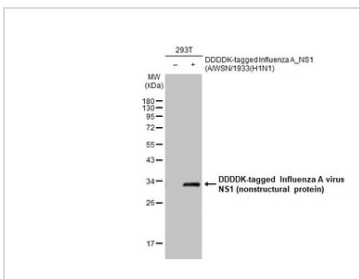
**GTX125990 ICC/IF Image**

Influenza A Virus NS1 antibody detects NS1 (H1N1) protein at by immunofluorescent analysis. Sample: A/WSN/33 infected Vero cells were fixed in 4% paraformaldehyde at RT for 20 min. Green: NS1 (H1N1) protein stained by Influenza A Virus NS1 antibody (GTX125990) diluted at 1:500. Blue: DAPI staining. Yellow: WGA life stained at 37°C, 30 min.



**GTX125990 WB Image**

Sample (10 µg of whole cell lysate)  
 A: mock DF-1 cell lysates  
 B: WSN-infected DF-1 cell lysates  
 12% SDS PAGE  
 GTX125990 diluted at 1:1000  
 The HRP-conjugated anti-rabbit IgG antibody (GTX213110-01) was used to detect the primary antibody.



**GTX125990 WB Image**

Non-transfected (-) and transfected (+) 293T whole cell extracts (30 µg) were separated by 12% SDS-PAGE, and the membrane was blotted with Influenza A virus NS1 (nonstructural protein) antibody (GTX125990) diluted at 1:1000. The HRP-conjugated anti-rabbit IgG antibody (GTX213110-01) was used to detect the primary antibody.



For full product information, images and publications, please visit our [website](#).