

## Cre recombinase antibody

Cat. No. GTX127270

Host	Rabbit
Clonality	Polyclonal
Isotype	IgG
Applications	WB, ICC/IF
Reactivity	Species independent

References ( 2 )

Package

100 µl, 25 µl

## Applications

## Application Note

\*Optimal dilutions/concentrations should be determined by the researcher.

Suggested dilution	Recommended dilution
WB	1:5000-1:20000
ICC/IF	Assay dependent

Not tested in other applications.

Calculated MW 39 kDa. ( [Note](#) )

## Properties

Form	Liquid
Buffer	PBS, 20% Glycerol
Preservative	0.025% ProClin 300
Storage	Store as concentrated solution. Centrifuge briefly prior to opening vial. For short-term storage (1-2 weeks), store at 4°C. For long-term storage, aliquot and store at -20°C or below. Avoid multiple freeze-thaw cycles.
Concentration	1.27 mg/ml (Please refer to the vial label for the specific concentration.)
Immunogen	Recombinant protein conjugated synthetic peptide encompassing a sequence within the center region of Cre recombinase. The exact sequence is proprietary.
Purification	Purified by antigen-affinity chromatography.
Conjugation	Unconjugated

## Note

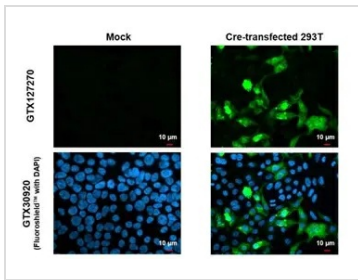
For laboratory research use only. Not for any clinical, therapeutic, or diagnostic use in humans or animals. Not for animal or human consumption.

Purchasers shall not, and agree not to enable third parties to, analyze, copy, reverse engineer or otherwise attempt to determine the structure or sequence of the product.



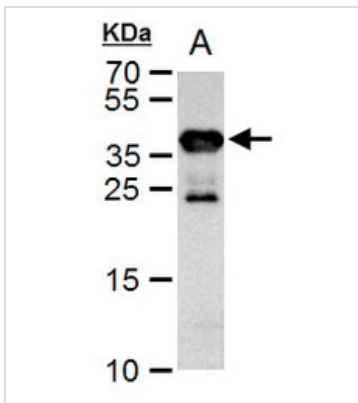
For full product information, images and publications, please visit our [website](#).

## DATA IMAGES



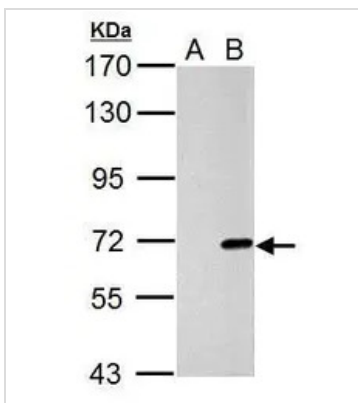
### GTx127270 ICC/IF Image

Cre recombinase antibody detects Cre recombinase protein by immunofluorescent analysis.  
Sample: Mock and transfected 293T cells were fixed in 4% paraformaldehyde at RT for 15 min.  
Green: Cre recombinase stained by Cre recombinase antibody (GTx127270) diluted at 1:500.  
Blue: Fluoroshield with DAPI (GTx30920).



### GTx127270 WB Image

Cre antibody detects Cre protein by western blot analysis.  
A. IPTG-induced cell lysate from E. coli expressing Cre recombinant proteins  
12.5 % SDS-PAGE  
Cre antibody (GTx127270) dilution: 1:10000



### GTx127270 WB Image

Cre recombinase antibody detects Cre recombinase protein by Western blot analysis.  
A. 30 μg 293T whole cell lysate/extract  
B. 30 μg whole cell lysate/extract of Cre-ERT2-transfected 293T cells (Cre-ERT2 fusion protein size: 72kDa)  
7.5 % SDS-PAGE  
Cre recombinase antibody (GTx127270) dilution: 1:10000



For full product information, images and publications, please visit our [website](https://www.genetex.com).