

## Cre recombinase antibody

Cat. No. GTX127271

Host	Rabbit
Clonality	Polyclonal
Isotype	IgG
Applications	WB, IP
Reactivity	Species independent

Package  
100 µl, 25 µl

## Applications

## Application Note

\*Optimal dilutions/concentrations should be determined by the researcher.

Suggested dilution	Recommended dilution
WB	1:5000-1:20000
IP	1:100-1:500

Not tested in other applications.

Calculated MW 39 kDa. ( [Note](#) )

## Properties

Form	Liquid
Buffer	PBS, 20% Glycerol
Preservative	0.01% Thimerosal
Storage	Store as concentrated solution. Centrifuge briefly prior to opening vial. For short-term storage (1-2 weeks), store at 4°C. For long-term storage, aliquot and store at -20°C or below. Avoid multiple freeze-thaw cycles.
Concentration	1 mg/ml (Please refer to the vial label for the specific concentration.)
Immunogen	Recombinant protein conjugated synthetic peptide encompassing a sequence within the center region of Cre recombinase. The exact sequence is proprietary.
Purification	Purified by antigen-affinity chromatography.
Conjugation	Unconjugated

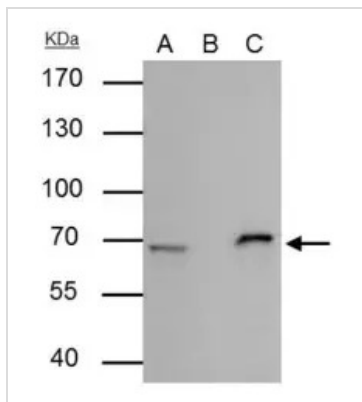
## Note

For laboratory research use only. Not for any clinical, therapeutic, or diagnostic use in humans or animals. Not for animal or human consumption.

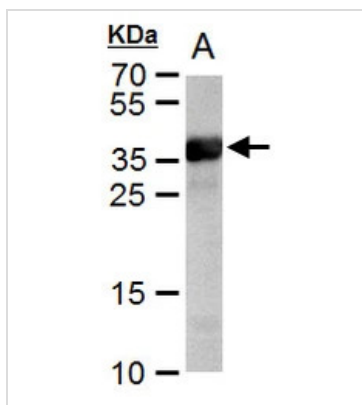
Purchasers shall not, and agree not to enable third parties to, analyze, copy, reverse engineer or otherwise attempt to determine the structure or sequence of the product.



For full product information, images and publications, please visit our [website](#).

**DATA IMAGES**

**GTX127271 IP Image**

Cre recombinase antibody immunoprecipitates Cre recombinase protein in IP experiments. IP Sample: 293T whole cell lysate/extract A : 20 µg whole cell lysate/extract of Cre recombinase protein expressing 293T cells B : Control with 2.5 µg of pre-immune rabbit IgG C : Immunoprecipitation of Cre recombinase protein by 2.6 µg of Cre recombinase antibody (GTX127271) 7.5% SDS-PAGE The immunoprecipitated Cre recombinase protein was detected by Cre recombinase antibody (GTX127271) diluted at 1 : 5000. EasyBlot anti-mouse IgG (HRP) (GTX221666-01) was used as a secondary reagent.

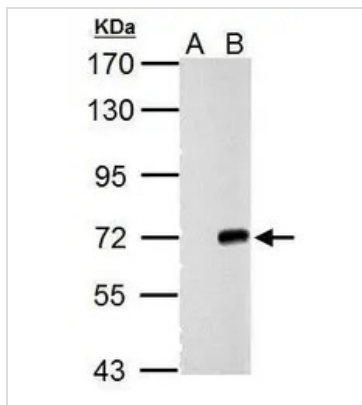

**GTX127271 WB Image**

Cre recombinase antibody detects Cre recombinase protein by western blot analysis.

A. IPTG-induced cell lysate from E. coli expressing Cre recombinant proteins  
12.5% SDS-PAGE

Cre recombinase antibody (GTX127271) dilution: 1:10000

The HRP-conjugated anti-rabbit IgG antibody (GTX213110-01) was used to detect the primary antibody.


**GTX127271 WB Image**

Cre recombinase antibody detects Cre recombinase protein by western blot analysis.

A. 30 µg 293T whole cell lysate/extract

B. 30 µg whole cell lysate/extract of Cre-ERT2-transfected 293T cells (Cre-ERT2 fusion protein size: 72kDa)  
7.5% SDS-PAGE

Cre recombinase antibody (GTX127271) dilution: 1:10000

The HRP-conjugated anti-rabbit IgG antibody (GTX213110-01) was used to detect the primary antibody.



For full product information, images and publications, please visit our [website](https://www.genetex.com).