

## ASXL1 antibody

Cat. No. GTX127284

Host	Rabbit
Clonality	Polyclonal
Isotype	IgG
Application	WB, IHC-P
Reactivity	Human, Mouse

Reference ( 3 )

★★★★☆ Review ( 1 )

Package

100 µl, 25 µl

## APPLICATION

## Application Note

\*Optimal dilutions/concentrations should be determined by the researcher.

Suggested dilution	Recommended dilution
WB	1:1000-1:10000
IHC-P	1:100-1:1000

Not tested in other applications.

Calculated MW	165 kDa. ( <a href="#">Note</a> )
Product Note	Knockdown/Knockout validation was supported by references (PMID:26385183)

## PROPERTIES

Form	Liquid
Buffer	PBS, 20% Glycerol
Preservative	0.01% Thimerosal
Storage	Store as concentrated solution. Centrifuge briefly prior to opening vial. For short-term storage (1-2 weeks), store at 4°C. For long-term storage, aliquot and store at -20°C or below. Avoid multiple freeze-thaw cycles.
Concentration	1 mg/ml (Please refer to the vial label for the specific concentration.)
Immunogen	Recombinant protein encompassing a sequence within the N-terminus region of human ASXL1. The exact sequence is proprietary.
Purification	Purified by antigen-affinity chromatography.
Conjugation	Unconjugated

## Note

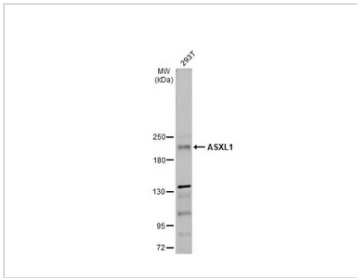
For laboratory research use only. Not for any clinical, therapeutic, or diagnostic use in humans or animals. Not for animal or human consumption.

Purchasers shall not, and agree not to enable third parties to, analyze, copy, reverse engineer or otherwise attempt to determine the structure or sequence of the product.



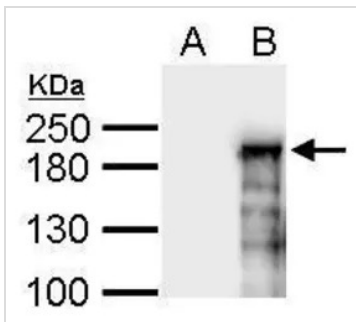
For full product information, images and publications, please visit our [website](#).

## DATA IMAGES



### GTX127284 WB Image

Whole cell extract (30  $\mu$ g) was separated by 5% SDS-PAGE, and the membrane was blotted with ASXL1 antibody (GTX127284) diluted at 1:5000. The HRP-conjugated anti-rabbit IgG antibody (GTX213110-01) was used to detect the primary antibody.



### GTX127284 WB Image

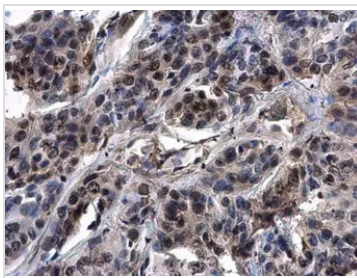
ASXL1 antibody detects ASXL1 protein by western blot analysis.

A. 50  $\mu$ g 293T whole cell lysate/extract

B. 50  $\mu$ g whole cell lysate/extract of GFP-human ASXL1-transfected 293T cells

ASXL1 antibody (GTX127284) dilution: 1:5000

The HRP-conjugated anti-rabbit IgG antibody (GTX213110-01) was used to detect the primary antibody.



### GTX127284 IHC-P Image

ASXL1 antibody detects ASXL1 protein at nucleus in human esophagus carcinoma by immunohistochemical analysis.

Sample: Paraffin-embedded human esophagus carcinoma.

ASXL1 antibody (GTX127284) diluted at 1:500.

Antigen Retrieval: Trilogy™ (EDTA based, pH 8.0) buffer, 15min



For full product information, images and publications, please visit our [website](https://www.genetex.com).