

## HIF1 alpha antibody

Cat. No. GTX127309

<b>Host</b>	Rabbit
<b>Clonality</b>	Polyclonal
<b>Isotype</b>	IgG
<b>Applications</b>	WB, ICC/IF, IHC-P, IHC-Fr, IP, ChIP assay
<b>Reactivity</b>	Human, Mouse, Rat, Rabbit, Bovine

References ( 218 )

★★★★☆ Review ( 26 )

Package

100 µl, 25 µl

## PRODUCT

## Summary

HIF1 alpha antibody recognizes HIF1 alpha (HIF1a) protein, which is a subunit of the heterodimeric transcription factor hypoxia-inducible factor-1 (HIF-1). HIF-1 is a master regulator of homeostatic adaptation to hypoxia (low oxygen supply) in various physiological and pathological conditions including normal development and cancer.

## Applications

## Application Note

\*Optimal dilutions/concentrations should be determined by the researcher.

Suggested dilution	Recommended dilution
WB	1:500-1:3000
ICC/IF	1:100-1:1000
IHC-P	1:100-1:1000
IHC-Fr	Assay dependent
IP	1:100-1:570
ChIP assay	Assay dependent

Not tested in other applications.

## Calculated MW

93 kDa. ( [Note](#) )

## Product Note

KO/KD validation is based on published data (PMID: 25428606).

## Properties

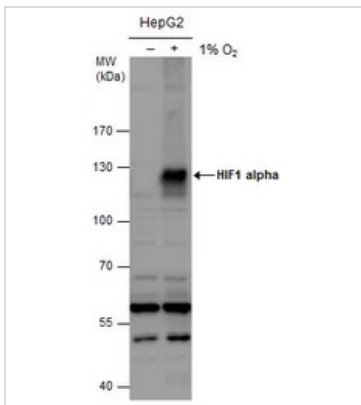
<b>Form</b>	Liquid
<b>Buffer</b>	PBS, 1% BSA, 20% Glycerol
<b>Preservative</b>	0.025% ProClin 300
<b>Storage</b>	Store as concentrated solution. Centrifuge briefly prior to opening vial. For short-term storage (1-2 weeks), store at 4°C. For long-term storage, aliquot and store at -20°C or below. Avoid multiple freeze-thaw cycles.
<b>Concentration</b>	0.31 mg/ml (Please refer to the vial label for the specific concentration.)



For full product information, images and publications, please visit our [website](#).

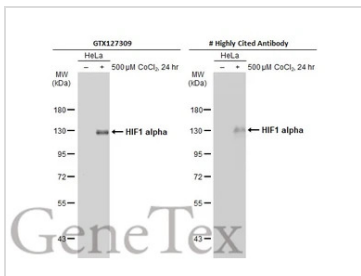
<b>Immunogen</b>	Recombinant protein encompassing a sequence within the C-terminus region of human HIF1 alpha. The exact sequence is proprietary.
<b>Purification</b>	Purified by antigen-affinity chromatography.
<b>Conjugation</b>	Unconjugated
<b>Note</b>	For laboratory research use only. Not for any clinical, therapeutic, or diagnostic use in humans or animals. Not for animal or human consumption.  Purchasers shall not, and agree not to enable third parties to, analyze, copy, reverse engineer or otherwise attempt to determine the structure or sequence of the product.

**DATA IMAGES**



**GTX127309 WB Image**

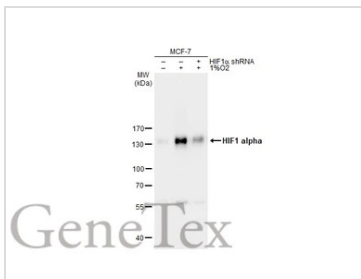
HIF1 alpha antibody detects HIF1 alpha protein by western blot analysis. Un-treated (-) and treated (+, 1% O<sub>2</sub> treatment for 24hr) HepG2 whole cell extracts (30 µg) were separated by 7.5% SDS-PAGE, and the membrane was blotted with HIF1 alpha antibody (GTX127309) diluted at 1:1000. The HRP-conjugated anti-rabbit IgG antibody (GTX213110-01) was used to detect the primary antibody.



**GTX127309 WB Image**

Untreated (-) and treated (+) HeLa whole cell extracts (30 µg) were separated by 7.5% SDS-PAGE, and the membrane was blotted with HIF1 alpha antibody (GTX127309) diluted at 1:1000. The HRP-conjugated anti-rabbit IgG antibody (GTX213110-01) was used to detect the primary antibody.

\*The competitor is not affiliated with GeneTex and does not endorse this product.



**GTX127309 WB Image**

Untreated (-) and treated (+) MCF-7 whole cell extracts (30 µg) were separated by 7.5% SDS-PAGE, and the membrane was blotted with HIF1 alpha antibody (GTX127309) diluted at 1:1000. The HRP-conjugated anti-rabbit IgG antibody (GTX213110-01) was used to detect the primary antibody.



For full product information, images and publications, please visit our [website](http://www.genetex.com).