

Protein A antibody

Cat. No. GTX127324

Host	Chicken
Clonality	Polyclonal
Isotype	IgY
Applications	WB
Reactivity	Staphylococcus aureus

★★★★★ Review (1)

Package
100 µl, 25 µl

Applications

Application Note

*Optimal dilutions/concentrations should be determined by the researcher.

Suggested dilution	Recommended dilution
WB	1:5000-1:20000

Not tested in other applications.

Properties

Form	Liquid
Buffer	PBS, 20% Glycerol
Preservative	0.01% Thimerosal
Storage	Store as concentrated solution. Centrifuge briefly prior to opening vial. For short-term storage (1-2 weeks), store at 4°C. For long-term storage, aliquot and store at -20°C or below. Avoid multiple freeze-thaw cycles.
Concentration	1 mg/ml (Please refer to the vial label for the specific concentration.)
Immunogen	The immunogen used to generate this antibody corresponds to Protein A
Purification	Purified by antigen-affinity chromatography.
Conjugation	Unconjugated

Note

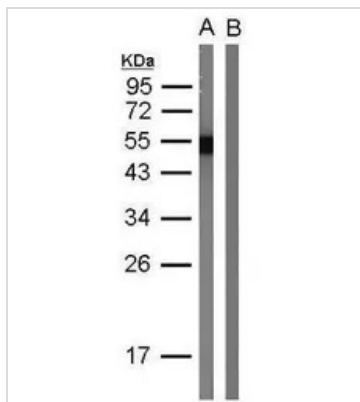
For laboratory research use only. Not for any clinical, therapeutic, or diagnostic use in humans or animals. Not for animal or human consumption.

Purchasers shall not, and agree not to enable third parties to, analyze, copy, reverse engineer or otherwise attempt to determine the structure or sequence of the product.



For full product information, images and publications, please visit our [website](#).

DATA IMAGES



GTX127324 WB Image

Western blot analysis of 0.1 ng protein A, using protein A antibody (GTX127324) (A) and GFP antibody (GTX124117) (B as negative control). After incubation of primary antibody, Easy blocker (GTX425858) was used to block interaction of protein A with secondary antibody.

A: 1 mg/ml IgY of Protein A (1:10000).

B: 1 mg/ml IgY of GFP (1:10000).



For full product information, images and publications, please visit our [website](https://www.genetex.com).